

# Edifact-meddelanden mellan flygterminal, speditör och åkeri

Utgiven av



Det här dokumentet är framtaget som vägledning vid införande av Edifact-meddelanden för informationsutväxling om godssändningar mellan flygterminal, speditör och åkeri. Dokumentet omfattar informationsflödena vid **export** och **import**. Följande kapitel ingår:

1. Introduktion och meddelandeöversikt
- 2. Bokningar/föraviseringar med IFTMBF**
3. Bokningsbekräftelser med IFTMBC
4. Instruktioner/slutaviseringar med IFTMIN
5. Statusmeddelanden med IFTSTA

Första kapitlet beskriver meddelandescenarier för export- resp importsändningar och informationsinnehållet för meddelandena i dessa scenarier. Efterföljande kapitel specificerar formaten vid användning av Edifact-standarden för meddelandeutväxlingen.

Meddelandena är baserade på Edifact Transports tidigare arbeten med Pharos EDI specifikation (som utgår från Edifactkatalog S.93A) resp implementeringsguiden för statusmeddelanden (Edifactkatalog D.94A).

Kapitlen kan var för sig hämtas hem från Edifact Transports webb-address:

**[www.edifact-transport.se](http://www.edifact-transport.se)**

## Dokumentstatus

Edifact Transport, som är ett dotterföretag till Transportindustriförbundet, har tillsammans med Cargo Center tagit fram dessa specifikationer. I arbetsgruppen, som rekommenderar införande av EDI enligt specifikationerna, har följande företag deltagit: ACE, CSC, Cargo Center Sweden, Conrab Data som representerar AGL och MFT, Refanut, SACT, SAS Cargo, Schenker, Wilson, TradeVision samt Edifactexperter från Edifact Transport.

## 2. Bokningar med IFTMBF

### Användaranvisning för

A - Bokning av inhämtning,  
C - Föravisering export, samt  
N - Bokning av utkörning

vid användning av IFTMBF  
enligt UN Edifact Standard Directory S.93A, Nordic  
Implementation Guide och Pharos kravspecifikation.

Not. För funktionell beskrivning av A - Bokning av inhämtning, C - Föravisering export och N - Bokning av utkörning samt dessas samband med andra meddelanden hänvisas till kapitel 1.

### INDEX:

---

2.1	Funktionella termer	2-3
2.2	Branching diagram IFTMBF - Booking	2-5
2.3	Guidelines for use of message segments	2-9
2.4	Message example	2-29

## 2.1 FUNKTIONELLA TERMER

### Förklaring:

I kolumnen Status anger M obligatorisk uppgift, C villkorlig uppgift, - uppgiften ges ej.  
Kolumnen Referens till EDIFACT-segm hänvisar till uppgiftens placering i nedan beskrivna EDIFACT-meddelande.

### Uppgifter på sändningsnivå

Referenser:	Status medd A	Status medd C	Status medd N	Referens till EDIFACT-segm
Sändnings-id	M	M	M	RFF/FF
AWB-nummer	-	C <sup>1</sup>	M	RFF/AWB
HWB-nummer	-	C <sup>1</sup>	C <sup>1</sup>	RFF/HWB
Godsavsändarens referens	C	-	-	RFF/CU
Godsmottagarens referens	-	-	C	RFF/AAO

### Datum och tider:

Dokument/meddelandedatum	M	M	M	DTM/137
(In-)hämtningstid, begärd	C	-	C	DTM/200
Inhämtningstid, tidigaste	C	-	-	DTM/234
Inhämtningstid, senaste	C	-	-	DTM/235
Leveranstid, begärd	-	-	C	DTM/2
Leveranstid, tidigaste	-	-	C	DTM/71
Leveranstid, senaste	-	-	C	DTM/74
Transportdag	-	-	C <sup>2</sup>	DTM/143
Planerad ankomsttid till terminal	-	C <sup>3</sup>	-	DTM/232
Planerad avgångstid	-	C	-	DTM/189

### Parter:

Speditör, nummer	M	M	M	NAD/FW
Godsavsändare, namn och adress	M	M	-	NAD/CZ
Hämtningsadress	C	-	C	NAD/PW
Godsmottagare, namn och adress	-	C	M	NAD/CN
Leveransadress	C	-	C	NAD/DP

### Transport och orter:

Transportskede (för-/huvud-/eftertransport)	M	M	M	TDT
Flygplats förtransport (IATA-kod)	M	-	-	TDT-LOC/8
Slutdestination AWB/huvudtrpt (IATA-kod)	-	C	-	TDT-LOC/8
Slutlig destination HWB (IATA-kod)	-	C	-	TDT-LOC/83
Säkerhetsklassning	M	M	-	TSR/Z05, Z06
Åkeri, namn	-	C <sup>3</sup>	-	TDT
Bilens nummer/namn	C	C <sup>3</sup>	C	TDT
Flightnummer	-	C	-	TDT

<sup>1)</sup> Om AWB-/HWB-nummer finns för godssändningen

<sup>2)</sup> Primär uppgift för att tidsbestämma av transporten

<sup>3)</sup> Skall anges vid säkerhetsklassad sändning

Status medd A	Status medd C	Status medd N	Referens till EDIFACT-segm
---------------	---------------	---------------	----------------------------

**Sändningsinformation:**

Begäran om utskrift av godsetikett/label	-	C	-	TSR
Typ av gods (enligt IATAs kodlista)	C	M	C	TSR
Sändningens bruttovikt + enhet	C	C	M	CNT/7
Sändningens volym + enhet	C	C	C	CNT/15
Totalt antal kollin	C	C	M	CNT/11
Varuefterkrav	-	-	C <sup>4</sup>	FTX/AAR
Flygfraktkostnader och valuta	-	-	C <sup>4</sup>	FTX/AAR
Distributionskostnader	-	-	C <sup>4</sup>	FTX/AAR

**Uppgifter på sändningsnivå** (rapporteras som en enda godspost)

Godsmärkning hela sändningen (alternativt ges unikt ID per kolli)	-	C	-	GID-PCI
Varubenämning	C	C	C	GID-FTX/AAA
Dimensioner	C	C	C	GID-DIM

**Uppgifter om enskilda kollin**

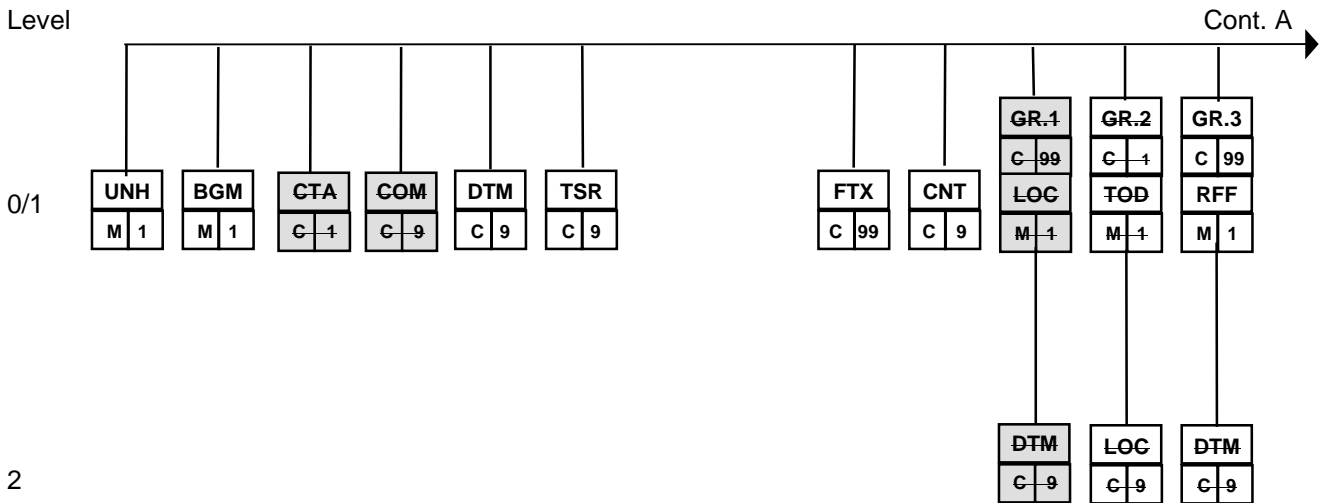
Typ av gods (undantagsrapportering)	-	C	-	GID-FTX/TDT
Varubenämning (undantagsrapportering)	-	C	-	GID-FTX/AAA
Vikt (undantagsrapportering - typ BIG och HEA)	-	C	-	GID-MEA
Volym (undantagsrapportering - typ BIG och HEA)	-	C	-	GID-MEA
Kolliidentitet (om unika ID tilldelats kolli) <sup>5</sup>	-	C	-	GID-PCI
Godsmärkning (undantagsrapportering)	-	C	-	GID-PCI
Dimensioner (undantagsrapportering - typ BIG)	-	C	-	GID-DIM

<sup>4)</sup> Anges vid varuefterkrav eller fraktkostnader som skall erläggas vid godsets mottagande.

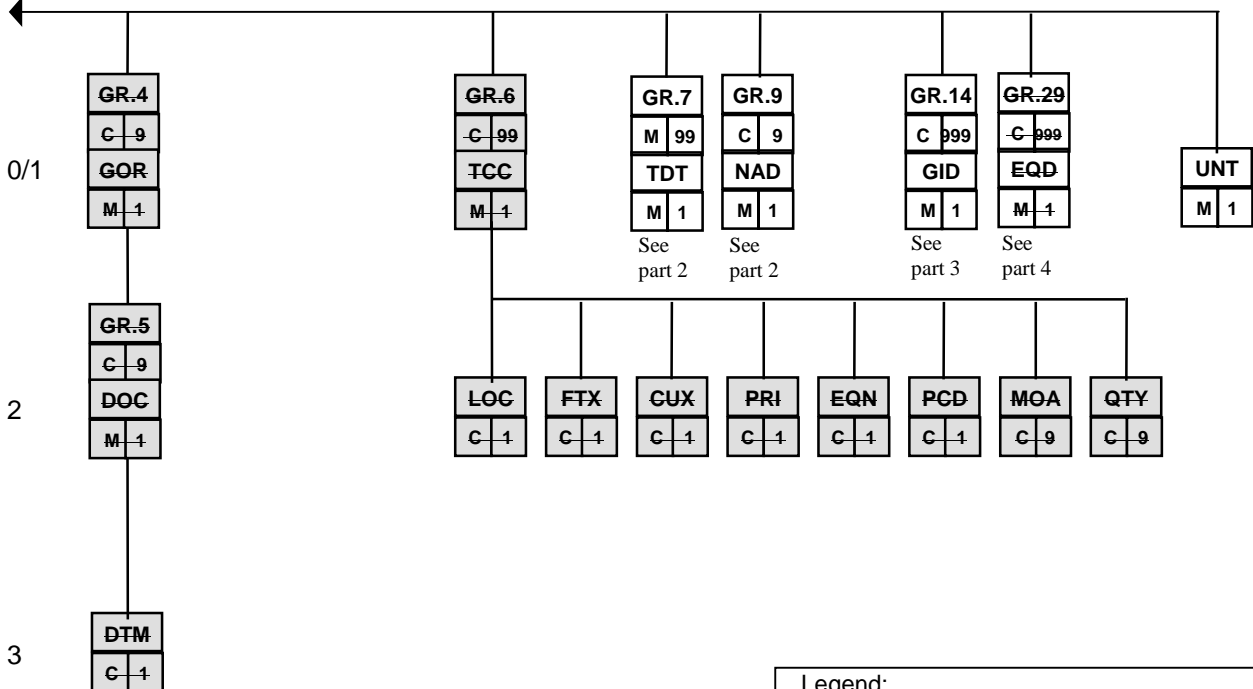
<sup>5)</sup> Finns unika kolliidentiteter (ex enligt Svensk Transportetikett, STE) används dessa istället för godsmärkning. När unika kolli-id saknas, alltså vid traditionell märkning av gods, rapporteras godsmärkningen på sändningsnivå. I undantagssituationer kan ibland sådan godsmärkning ges också på kollinivå, t ex om kolli löpnummerats inom sändningen.

## 2.2 BRANCHING DIAGRAM IFTMBF - BOOKING, 1(4)

### Part 1 - Message level



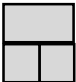
### A. continuation



Legend:

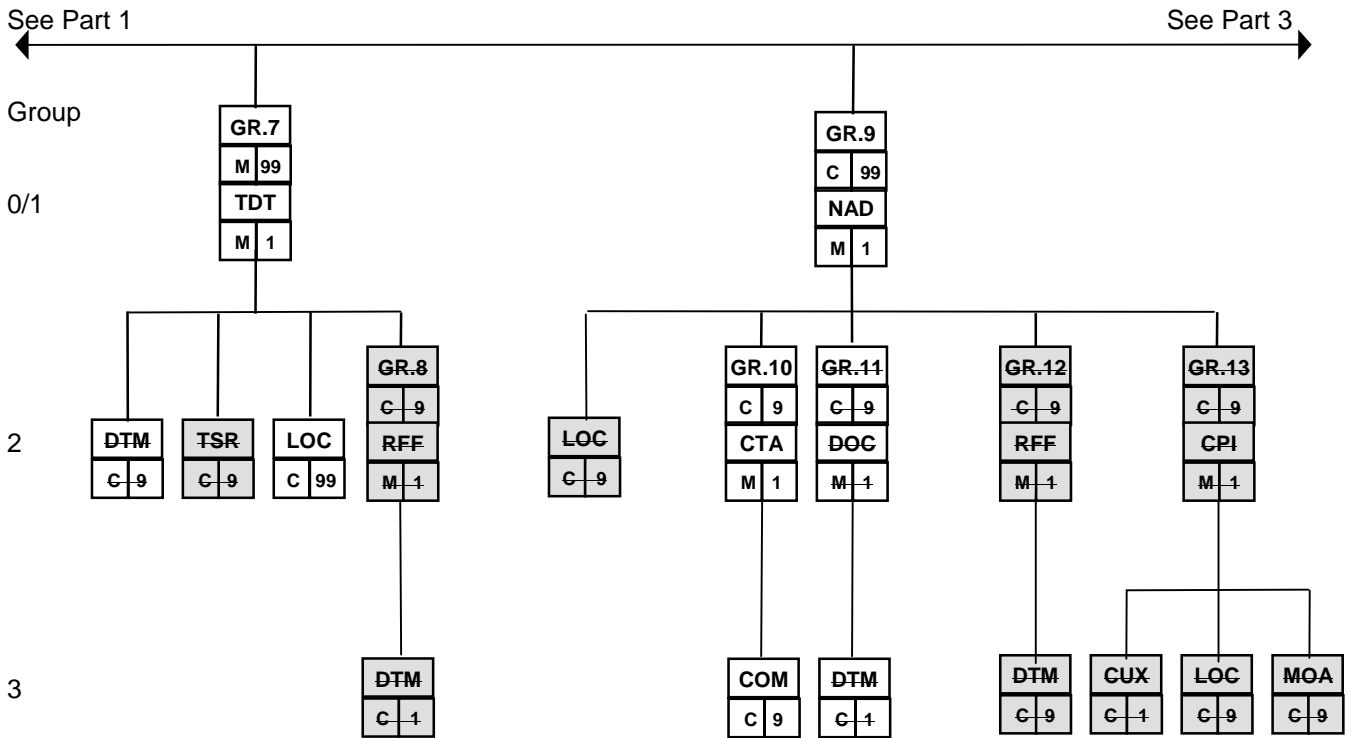
This Diagram shows all the segments in the message, according to directory S 93A.

**Segments where the text has been crossed out are not used in this subset**

 Segments shaded grey are not included in the Nordic Implementation Guide for IFTM Messages

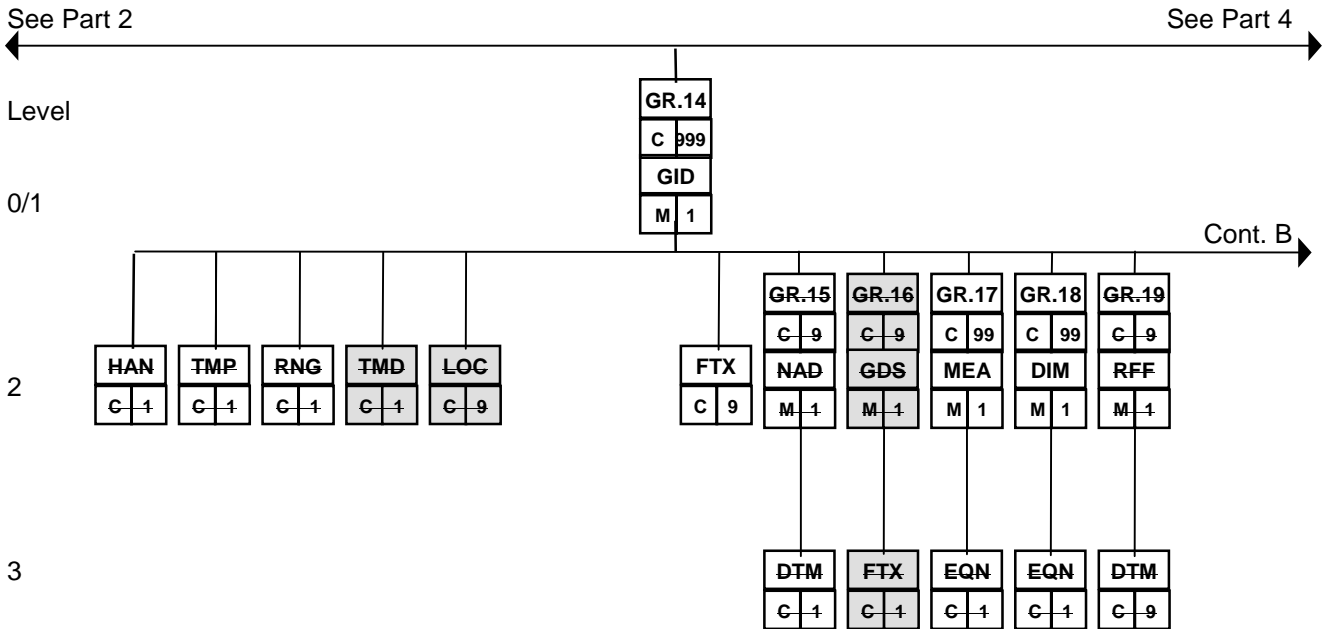
## Branching diagram IFTMBF - Booking, 2(4)

Part 2 Group 7 = TDT and Group 9 = NAD

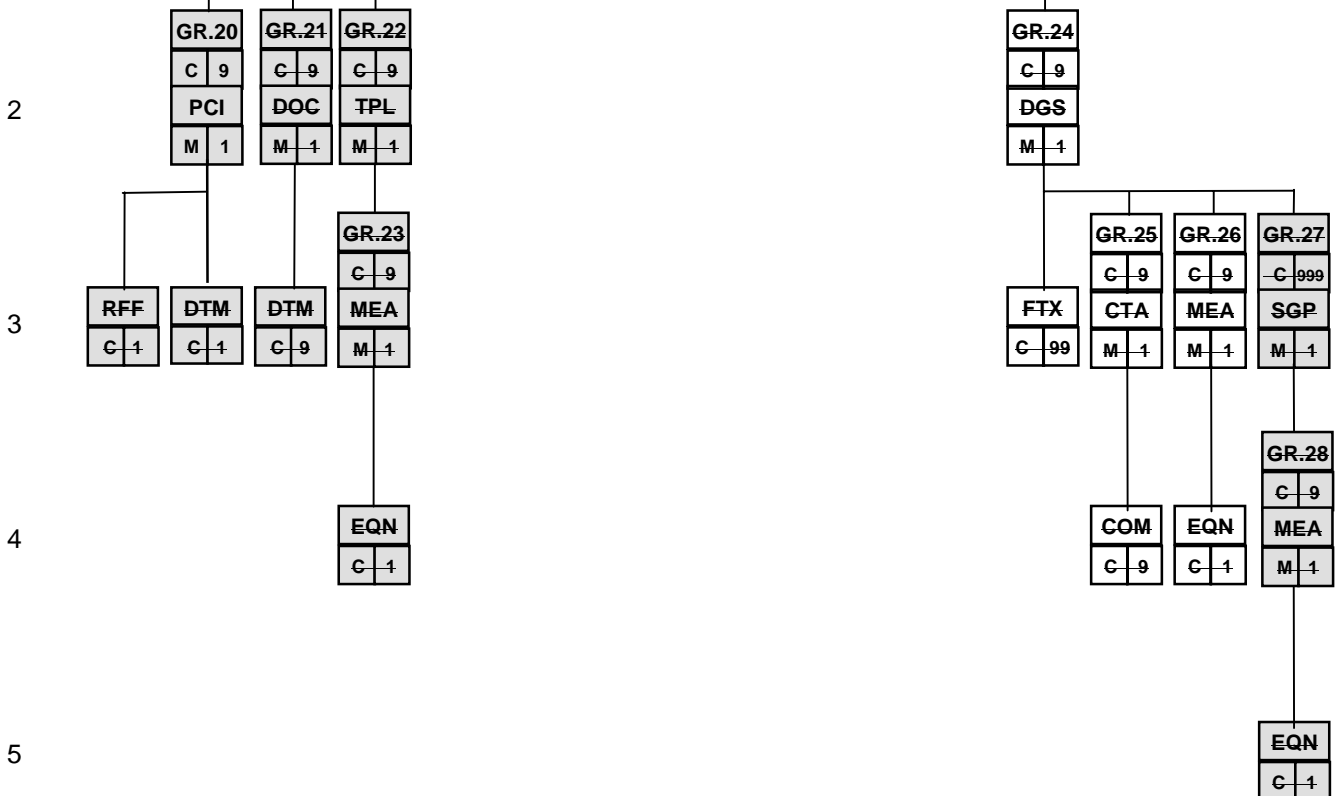


### Branching diagram IFTMBF - Booking, 3(4)

Part 3 - Group 14 = GID



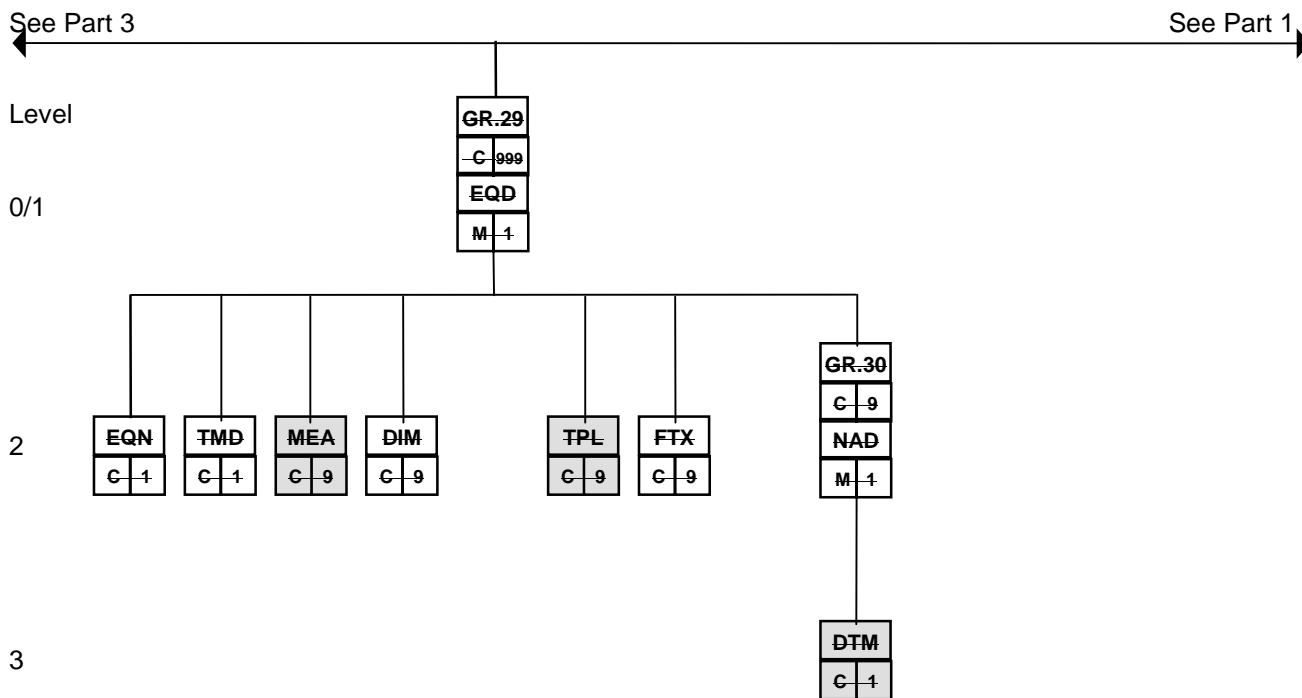
B. Continuation



## Branching diagram IFTMBF - Booking, 4(4)

Part 4 - Group 29 = EQD

*Note: This group is not used in this subset.*



## 2.3 GUIDELINES FOR THE USE OF MESSAGE SEGMENTS

Level 0/1 **UNH** BGM DTM TSR FTX CNT TOD<sup>2</sup> RFF<sup>3</sup> TDT<sup>7</sup> NAD<sup>9</sup> GID<sup>14</sup> EQD<sup>29</sup>UNT

**LEVEL 0 UNH MESSAGE HEADER M/1 UNH**

*Function:* To head, identify and specify a message.

*Enh. descr:* Identifies the message as a Booking Firm message, definitely booking forwarding and/or transport services and/or space for a consignment. The message will contain the conditions under which the sender of the messages requires the services to take place.

Segment structure and code values	EDIFACT	ET	Not	Swedish translation/comments
0062 MESSAGE REFERENCE NUMBER	M an..14		1	
S009 MESSAGE IDENTIFIER	M			
0065 Message type identifier IFTMBF Booking Firm	M an..6			Meddelandetyp
0052 Message type version number S Standard message (Status 2)	M an..3			Meddelandetyps version
0054 Message type release number 93A	M an..3			Meddelandetyps utgåvenummer
0051 Controlling agency UN United nations	M an..2			Utfärdande organ
0057 Association assigned code SE0023 <b>SE0027</b>	C an..6	<b>R</b>		Användargrups kod
0068 COMMON ACCESS REFERENCE	C an..35	<b>X</b>		
S010 STATUS OF THE TRANSFER	C	X		
0070 Sequence message transfer number	M n..2	X		
0073 First/last sequence message transfer indication	C a1	X		
			2	Bokning landsvägstransport
			3	<b>Föravisering till flygterminal</b>

**Example:** UNH+MSGID002+IFTMBF:S:93A:UN:SE0023'

1 The count of messages in an interchange. Normal use is that the first message in an interchange is set to 1, the count is then incremented by 1 for each message in the interchange. Some EDI software may use this data element for sequential count of messages over a longer period of time, e.g. starting at 1 every new year.

2 Based on the Nordic Implementation Guide for IFTM Messages, version 1, IFTMIN/NIG001.

3 Compared to the Nordic Implementation Guide for IFTM Messages this subset additionally makes use of group 20/PCI.

Level 0/1 UNH **BGM** DTM TSR FTX CNT TOD<sup>2</sup> RFF<sup>3</sup> TDT<sup>7</sup> NAD<sup>9</sup> GID<sup>14</sup> EQD<sup>29</sup>UNT**LEVEL 0 BGM BEGINNING OF MESSAGE M/1****BGM***Function: To indicate the type and function of a message and to transmit the identifying number.*

Segment structure and code values	EDIFACT	ET	Not	Swedish translation/comments
C002 DOCUMENT/MESSAGE NAME	C	<b>R</b>		
1001 Document/message name, coded	C an..3	<b>R</b>		Dokument-/Meddelandenamn, kod
335 Booking request				Bokningsbegäran
1131 Code list qualifier	C an..3	X		
3055 Code list responsible agency, coded	C an..3	X		
1000 Document/message name	C an..35	X		
1004 DOCUMENT/MESSAGE NUMBER	C an..35		1	Dokument-/meddelandennummer
1225 MESSAGE FUNCTION, CODED	C an..3		2	Meddelandefunktion, kod
1 Cancellation				Annullering av tidigare meddelande
5 Replace				Ersäter tidigare meddelande
9 Original ( <b>default</b> )				Original
4343 RESPONSE TYPE, CODED	C an..3	X		

**Example: BGM+335+DOCID002+9'**

1 Primary reference for this message, e.g. the reference number of the party making the request for booking. References should preferentially be given in segment RFF, where they can be qualified.

2 Cancellation and replacement may only be relevant if the status of the booking in the partner's system is known. Implementation of such functions should be combined with monitoring of confirmation messages in the application.

Level 0/1 UNH BGM **DTM** TSR FTX CNT TOD<sup>2</sup> RFF<sup>3</sup> TDT<sup>7</sup> NAD<sup>9</sup> GID<sup>14</sup> EQD<sup>29</sup>UNT**LEVEL 1 DTM DATE/TIME/PERIOD C/9 DTM***Function:* A segment to indicate a date and time applying to the whole message, e.g., date and time of document issue.

Segment structure and code values	EDIFACT	ET	Not	Swedish translation/comments
C507 DATE/TIME/PERIOD	M			
2005 Date/time/period qualifier	M an..3			Tidsangivelser, kval
2 Delivery date/time, requested				Begärd leveranstidpunkt (till köparen)
71 Delivery date/time, requested for (after and including)				Tidigaste leveranstidpunkt, begärd
74 Delivery date/time, requested for (prior to and including)				Senaste leveranstidpunkt, begärd
137 Document/message date/time				Utfärdandedatum
143 Acceptance date/time of goods			1	Övertagandetidpunkt
<b>189 Departure date/time, scheduled</b>				<b>Planerad avgångstid</b>
200 Pick-up/collection date/time of cargo				Hämtningstidpunkt, gods
<b>232 Arrival date/time, scheduled</b>				<b>Planerad ankomsttid till terminal</b>
234 Collection date/time, earliest				Tidigaste hämtningstidpunkt
235 Collection date/time, latest				Senaste hämtningstidpunkt
2380 Date/time/period	C an..35	<b>R</b>		Datum/tidpunkt/period
2379 Date/time/period format qualifier	C an..3		2	Datum-/Tidsformat, kod
101 YYMMDD				ÅÅMMDD
102 CCYYMMDD				ÅÅÅÅMMDD
201 YYMMDDHHMM				ÅÅMMDDTTMM
203 CCYYMMDDHHMM				ÅÅÅÅMMDDTTMM

**Example:** DTM+234:199405201300:203'  
DTM+235:199405201600:203'

To be picked up on 20<sup>th</sup> of May between 13 and 16 p.m.

1 In Sweden Transportdag (Date of transport) and Acceptance date/time of goods are used as synonyms. It is regarded as the date when the transport of goods commences, i.e. it is the first date debiting of costs can take place.

2 The date/time/period formats that include digits for century are recommended for information interchange, however systems should be capable of handling all formats listed.

Level 0/1 UNH BGM DTM **TSR** FTX CNT TOD<sup>2</sup> RFF<sup>3</sup> TDT<sup>7</sup> NAD<sup>9</sup> GID<sup>14</sup> EQD<sup>29</sup>UNT**LEVEL 1 TSR TRANSPORT SERVICE REQUIREMENTS C/9****TSR***Function: To specify the contract and carriage conditions and service and priority requirements for the transport.*

Segment structure and code values	EDIFACT	ET	Not	Swedish translation/comments
C536 CONTRACT AND CARRIAGE CONDITION	C	<b>X</b>		
4065 Contract and carriage condition, coded	M an..3	<b>X</b>		Regelverk för transportvillkor, kod
1131 Code list qualifier	C an..3	X		
3055 Code list responsible agency, coded	C an..3	X		
C233 SERVICE	C	<b>R</b>		
7273 Service requirement, coded	M an..3		1	Servicebegäran, kod
<b>Z05 Transport under security arrangement</b>				<b>Säkerhetsklassad transport</b>
<b>Z06 Transport <u>not</u> under security arrangement</b>				<b>Ej säkerhetsklassad transport</b>
<b>Z07 Request for printout of goods label</b>				<b>Begäran om utskrift av godsetikett/label</b>
1131 Code list qualifier	C an..3	X		
3055 Code list responsible agency, coded	C an..3	X		
7273 Service requirement, coded	C an..3			
See list of code values for first occurrence of 7273				
1131 Code list qualifier	C an..3	X		
3055 Code list responsible agency, coded	C an..3	X		
C537 TRANSPORT PRIORITY	C			
4219 Transport priority, coded	M an..3			Befordringsklass, kod
1 Express				Högsta
2 High speed				Näst högsta
3 Normal speed				Normal
1131 Code list qualifier	C an..3	X		
3055 Code list responsible agency, coded	C an..3	X		
C703 NATURE OF CARGO	C			
7085 Nature of cargo, coded	M an..3			Godstyp, kod
<b>Codes according to IATAs code list</b>			<b>2</b>	<b>Typ av gods</b>
1131 Code list qualifier	C an..3	X		
3055 Code list responsible agency, coded	C an..3			
<b>3 IATA</b>				

**Example: TSR++Z05'****Rules for secured transport chain to be observed**

1 Used to indicate secured transport to air terminal.

2 IATA's code list for Special handling codes is published as a separate document under 'Bibliotek/Kodlistor' on the Edifact Transport's web site.

Level 0/1 UNH BGM DTM TSR **FTX** CNT TOD<sup>2</sup> RFF<sup>3</sup> TDT<sup>7</sup> NAD<sup>9</sup> GID<sup>14</sup> EQD<sup>29</sup>UNT**LEVEL 1 FTX FREE TEXT C/99****FTX***Function: A segment to specify processable supplementary information relating to the goods item.*

Segment structure and code values	EDIFACT	ET	Not	Swedish translation/comments
4451 TEXT SUBJECT QUALIFIER <b>AAR Terms of delivery</b>	M an..3		<b>1</b>	Textämnen, kval <b>Leveransvillkor</b>
4453 TEXT FUNCTION, CODED	C an..3	X		
C107 TEXT REFERENCE	C	X		
4441 Free text, coded	M an..3	X		
1131 Code list qualifier	C an..3	X		
3055 Code list responsible agency, coded	C an..3	X		
C108 TEXT LITERAL	C	<b>R</b>		
4440 Free text	M an..70			
4440 Free text	C an..70			
4440 Free text	C an..70			
4440 Free text	C an..70			
4440 Free text	C an..70			
3453 LANGUAGE, CODED	C an..3	X		

**Example: FTX+AAR+++COD: 1.234,00 SEK'**

1 Used to specify COD amount and similar costs to be collected by carrier from consignee.

Level 0/1 UNH BGM DTM TSR FTX CNT TOD<sup>2</sup> RFF<sup>3</sup> TDT<sup>7</sup> NAD<sup>9</sup> GID<sup>14</sup> EQD<sup>29</sup>UNT**LEVEL 1 CNT CONTROL TOTAL C/9 CNT***Function: A segment to specify totals for a consignment.*

Segment structure and code values	EDIFACT	ET	Not	Swedish translation/comments
C270 CONTROL	M			
6069 Control qualifier	M an..3			Dimensionstyp, kval
7 Total gross weight				Total bruttovikt
11 Total number of packages				Totalt antal kollin
15 Total consignment, cube				Total volym
6066 Control value	M n..18			Kontrolltotal, värde
6411 Measure unit qualifier	C an..3			
KGM Kilogram				
LTR Litre (Volume)				
MTQ Cubic metre				
PCE Pieces				
TNE Tonne				

**Example: CNT+15:7.5:MTQ'****Booked volume is 7.5 cubic metres**

Level 0/1 UNH BGM DTM TSR FTX CNT TOD<sup>2</sup> **RFF**<sup>3</sup> TDT<sup>7</sup> NAD<sup>9</sup> GID<sup>14</sup> EQD<sup>29</sup>UNT**Level 1 Start of segment group 3 RFF C/99** **RFF***Function:* A group of segments containing a reference and constants which apply to the entire message.**LEVEL 1 RFF REFERENCE M/1** **RFF***Function:* To specify a reference applying to the whole message.*Enh. descr:* If the DE 1225 (Message function, coded) in BGM segment contains a code other than 9, a reference number to the message in question must be given.

Segment structure and code values	EDIFACT	ET	Not	Swedish translation/comments
C506 REFERENCE	M			
1153 Reference qualifier	M an..3		1	Referenstyp, kval
<b>AAO Consignee's shipment reference number</b>				<b>Godsmottagarens referens</b>
<b>AWB Air waybill number</b>				<b>AWB-nummer</b>
<b>CU Consignor's reference number</b>				<b>Godsavsändarens referens</b>
<b>FF Freight forwarder's reference number</b>				<b>Speditörens referensnummer</b>
<b>HWB House waybill number</b>				<b>House AWB-nummer</b>
1154 Reference number	C an..35	<b>R</b>		Referensnummer
1156 Line number	C an..6	X		
4000 Reference version number	C an..35	X		

**Example: RFF+CU+DOCID001'****Consignor's reference is DOCID001**

1 Freight forwarders reference number is mandatory, AWB number and House AWB numbers are given if such references have been designated. Consignor reference may be given for pre-carriage, consignee reference may be given for on-carriage.

Level 0/1 UNH BGM DTM TSR FTX CNT TOD<sup>2</sup> RFF<sup>3</sup> **TDT**<sup>7</sup> NAD<sup>9</sup> GID<sup>14</sup> EQD<sup>29</sup>UNT**Level 1 Start of segment group 7 TDT M/99****TDT**

Function: A group of segments to indicate details of the movement of goods such as mode and means of transport, locations, departure, and arrival date(s) and time(s).

**LEVEL 1 TDT DETAILS OF TRANSPORT M/1****TDT**

Function: To specify the transport details such as mode of transport, means of transport, its conveyance reference number and the identification of the means of transport.

Segment structure and code values	EDIFACT	ET	Not	Swedish translation/comments
8051 TRANSPORT STAGE QUALIFIER	M an..3			Transportskede, kod
10 Pre-carriage transport				Förtransport
20 Main transport				Huvudtransport
30 On-carriage transport				Eftertransport
8028 CONVEYANCE REFERENCE NUMBER	C an..17		1	
C220 MODE OF TRANSPORT	C			
8067 Mode of transport, coded	C an..3			Transportsätt, kod
3 Road transport				Väg
4 Air transport				Flyg
5 Mail/parcel service				Post/kurir
8066 Mode of transport	C an..17	X		
C228 TRANSPORT MEANS	C	X		
8179 Type of means of transport identification	C an..8	X		
8178 Type of means of transport	C an..17	X		
C040 CARRIER	C			Transportör
3127 Carrier identification	C an..17			
1131 Code list qualifier	C an..3	X		
3055 Code list responsible agency, coded	C an..3	X		
3128 Carrier name, Free form	C an..35		2	
8101 TRANSIT DIRECTION, CODED	C an..3	X		
C401 EXCESS TRANSPORTATION INFORMATION	C	X		
8457 Excess transportation reason, coded	M an..3	X		
8459 Excess transportation responsibility, coded	M an..3	X		
7130 Customer authorisation number	C an..17	X		
C222 TRANSPORT IDENTIFICATION	C	X		
8213 Id of means of transport identification	C an..9	X		
1131 Code list qualifier	C an..3	X		
3055 Code list responsible agency, coded	C an..3	X		

1 Pre-carriage: Reference to conveyance number of truck/van and carrier name are required for secured transport. Main carriage: carrier code and flight number, if known at the time of booking.

2 Pre-carriage: Reference to conveyance number of truck/van and carrier name are required for secured transport.

8212	Id of the means of transport	C an..17	X		
8453	Nationality of means of transport, coded	C an..3	X		

Example: TDT+10'

Pre-carriage transport

Level 0/1 UNH BGM DTM TSR FTX CNT TOD<sup>2</sup> RFF<sup>3</sup> **TDT**<sup>7</sup> NAD<sup>9</sup> GID<sup>14</sup> EQD<sup>29</sup>UNT

Level 1 Cont. of segment group 7 TDT M/99

TDT

**LEVEL 2 LOC PLACE/LOCATION IDENTIFICATION C/99****LOC***Function: A segment to indicate a location such as place of departure, destination, etc. related to this leg of transport.*

Segment structure and code values	EDIFACT	ET	Not	Swedish translation/comments
3227 PLACE/LOCATION QUALIFIER	M an..3		1	Typ av plats, kval
5 Place of departure				Avsändningsort/-plats
8 Place of destination				Bestämmelseort/-plats
83 Place of delivery (by on-carriage)				Slutlig leveransort
C517 LOCATION IDENTIFICATION	C	<b>R</b>		
3225 Place/location identification	C an..25			Plats/ort, kod
1131 Code list qualifier	C an..3			Kodlistetyp, kval
145 Airport/city				Flygplatser
3055 Code list responsible agency, coded	C an..3			Kodlisteansvarig, kod
3 IATA				
3224 Place/location, Free form	C an..17			Plats/ort, klartext
C519 RELATED LOCATION ONE IDENTIFICATION	C	<b>X</b>		
3223 Related place/location one identification	C an..25	<b>X</b>		
1131 Code list qualifier	C an..3	X		
3055 Code list responsible agency, coded	C an..3	X		
3222 Related place/location one	C an..70	X		
C553 RELATED LOCATION TWO IDENTIFICATION	C	X		
5479 RELATION, CODED	C an..3	X		

**Example: LOC+5+ARN:145:3'****Departure from Arlanda airport**

1 For pre-carriage: indicate airport as 'place of destination' (which is 'place of departure' for the main transport).  
For on-carriage: indicate airport as 'place of departure' (which is 'place of destination' for the main transport).

Level 0/1 UNH BGM DTM TSR FTX CNT TOD<sup>2</sup> RFF<sup>3</sup> TDT<sup>7</sup> NAD<sup>9</sup> GID<sup>14</sup> EQD<sup>29</sup>UNT**Level 1 Start of segment group 9 NAD C/99** **NAD**

*Function:* A group of segments to identify a party, related references, locations contacts, required documents, and charges to be paid by the party.

**LEVEL 1 NAD NAME AND ADDRESS M/1** **NAD**

*Function:* A segment to identify the party's name, address, and function.

Segment structure and code values	EDIFACT	ET	Not	Swedish translation/comments
3035 PARTY QUALIFIER	M an..3		1	Part, kval
CN Consignee				Godsmottagare
CZ Consignor				Godsavsändare
DP Delivery party				Leveransadress
FW Freight forwarder				Speditör
PW Despatch party				Hämtningsadress
C082 PARTY IDENTIFICATION DETAILS	C		2	
3039 Party id identification	M an..17			Parts identifikation
1131 Code list qualifier	C an..3			Kodlistetyp, kval. Bör ej användas
3055 Code list responsible agency, coded	C an..3			Kodlisteansvarig, kod
3 IATA				<b>Här gäller IATA+CASS</b>
87 Assigned by carrier				Transportörens kodlista
C058 NAME AND ADDRESS	C			
3124 Name and address line	M an..35	X		Namn och adress (1-5 rader)
3124 Name and address line	C an..35	X		
3124 Name and address line	C an..35	X		
3124 Name and address line	C an..35	X		
3124 Name and address line	C an..35	X		
C080 PARTY NAME	C			
3036 Party name	M an..35			Parts namn
3036 Party name	C an..35			
3036 Party name	C an..35			
3036 Party name	C an..35			
3036 Party name	C an..35			
3045 Party name format, coded	C an..3	X		
C059 STREET	C			
3042 Street and number/P.O. Box	M an..35			Gata och nummer/postbox
3042 Street and number/P.O. Box	C an..35			
3042 Street and number/P.O. Box	C an..35			
3164 CITY NAME	C an..35			Ortsnamn
3229 COUNTRY SUB-ENTITY IDENTIFICATION	C an..9			Område inom land, kod

1 For pre-carriage: Consignor (CZ) is mandatory.  
For on-carriage: Consignee (CN) is mandatory.

2 Freight forwarder (FW) is identified by code only.

3251 POSTCODE IDENTIFICATION

C an..9

1

Postnummer

3207 COUNTRY, CODED

C an..3

Landskod

Use ISO 3166 alpha two country code.

**Example: NAD+CZ+++HK IMPORT+Postbox 134:Møllersgade 17+Padborg++6330+DK<sup>1</sup> Consignor's address**

<sup>1</sup> The Swedish postcode is exchanged in unedited form, i.e. without any separating space between the third and fourth digits.

Level 0/1 UNH BGM DTM...CNT TOD<sup>2</sup> RFF<sup>3</sup> CPI<sup>6</sup> TCC<sup>7</sup> TDT<sup>8</sup> NAD<sup>10</sup>GID<sup>16</sup>EQD<sup>34</sup> UNT

Level 1 Cont. of segment group 10 NAD M/99

Level 2 Start of segment group 11 CTA C/9 (NAD) CTA

*Function:* A group of segments to identify a contact and its communications related to the party.

**LEVEL 2 CTA CONTACT INFORMATION M/1 CTA**

*Function:* A segment to identify a person or department within a party.

Segment structure and code values	EDIFACT	ET	Note	Swedish translation/comments
3139 CONTACT FUNCTION, CODED IC Information contact	C an..3			
C056 DEPARTMENT OR EMPLOYEE DETAILS	C			
3413 Department or employee identification	C an..17			Avdelning/anställd, kod
3412 Department or employee, Free form	C an..35			Avdelning/anställd, klartext

**Example:** CTA+IC+::Jesper Hansen' Contact person of organisation shown in preceding NAD segment.

Level 0/1 UNH BGM DTM...CNT TOD<sup>2</sup> RFF<sup>3</sup> CPI<sup>6</sup> TCC<sup>7</sup> TDT<sup>8</sup> NAD<sup>10</sup>GID<sup>16</sup>EQD<sup>34</sup> UNT

Level 1 Cont. of segment group 10 NAD M/99

Level 2 Cont. of segment group 11 CTA C/9

(NAD) CTA

**LEVEL 3 COM COMMUNICATION CONTACT C/9****COM**

*Function:* To identify a communication number of a department or a person to whom communication should be directed.

Segment structure and code values	EDIFACT	ET	Note	Swedish translation/comments
C076 COMMUNICATION CONTACT	M			
3148 Communication number	M an..25			Kommunikationsnummer
3155 Communication channel qualifier	M an..3		1	Kommunikationssätt, kod
EM Electronic mail				Elektronisk post
FX Telefax				Telefax
TE Telephone				Telefon

**Example: COM+081234567:TE'**

1 Domestic telephone number is written as area code (or equivalent) followed immediately by the subscriber number, without any editing characters.

International telephone number is written with a heading plus sign, immediately followed by country code, area code (or equivalent) with leading zero (or equivalent) excluded, followed by subscriber number.

Level 0/1 UNH BGM DTM TSR FTX CNT TOD<sup>2</sup> RFF<sup>3</sup> TDT<sup>7</sup> NAD<sup>9</sup> **GID**<sup>14</sup> EQD<sup>29</sup>UNT**Level 1 Start of segment group 14 GID C/999****GID***Function:* A group of segments to describe the goods items for which transport is undertaken.**LEVEL 1 GID GOODS ITEM DETAILS M/1****GID***Function:* A segment to identify a goods item for which transport is undertaken. A goods item can be identified by up to three levels of packaging.

Segment structure and code values	EDIFACT	ET	Not	Swedish translation/comments
1496 GOODS ITEM NUMBER	C n..5			Godspost löpnummer
C213 NUMBER AND TYPE OF PACKAGES	C		1	
7224 Number of packages	M n..8			Antal kollin
7065 Type of packages identification	C an..7			Kollislag, kod
Use UN/ECE Recommendation no. 21.				
1131 Code list qualifier	C an..3	X		
3055 Code list responsible agency, coded	C an..3	X		
7064 Type of packages	C an..35			Kollislag, klartext
C213 NUMBER AND TYPE OF PACKAGES	C	<b>X</b>		
7224 Number of packages	M n..8	<b>X</b>		Antal kollin
7065 Type of packages identification	C an..7	<b>X</b>		Kollislag, kod
1131 Code list qualifier	C an..3	X		
3055 Code list responsible agency, coded	C an..3	X		
7064 Type of packages	C an..35	<b>X</b>		Kollislag, klartext
C213 NUMBER AND TYPE OF PACKAGES	C	<b>X</b>		
7224 Number of packages	M n..8	<b>X</b>		Antal kollin
7065 Type of packages identification	C an..7	<b>X</b>		Kollislag, kod
1131 Code list qualifier	C an..3	X		
3055 Code list responsible agency, coded	C an..3	X		
7064 Type of packages	C an..35	<b>X</b>		Kollislag, klartext

**Example: GID+1'**

1 Used only if 'number of packages' in CNT is not sufficiently precise.

Level 0/1 UNH BGM DTM TSR FTX CNT TOD<sup>2</sup> RFF<sup>3</sup> TDT<sup>7</sup> NAD<sup>9</sup> **GID**<sup>14</sup> EQD<sup>29</sup>UNT

Level 1 Cont. of segment group 14 GID C/999

GID

**LEVEL 2 FTX FREE TEXT C/9****FTX***Function: A segment to specify processable supplementary information relating to the goods item.*

Segment structure and code values	EDIFACT	ET	Not	Swedish translation/comments
4451 TEXT SUBJECT QUALIFIER AAA Goods description <b>TDT Transport details remarks</b>	M an..3			Textämnen, kval Varubenämning <b>1 Tilläggsinformation om transporten</b>
4453 TEXT FUNCTION, CODED	C an..3	X		
C107 TEXT REFERENCE	C	✗		
4441 Free text, coded	M an..3	✗	2	Typ av gods vid 4451=TDT
1131 Code list qualifier	C an..3	X		
3055 Code list responsible agency, coded <b>3 IATA</b> 87 Assigned by carrier	C an..3	✗		<b>Enligt IATAs kodlista</b> Transportörens kodlista
C108 TEXT LITERAL	C		<b>R</b>	
4440 Free text	M an..70			
4440 Free text	C an..70			
4440 Free text	C an..70			
4440 Free text	C an..70			
4440 Free text	C an..70			
3453 LANGUAGE, CODED	C an..3	X		

**Example: FTX+AAA+++Printed matter'**

1 Used to state the nature of goods, when goods items are specified individually.

2 IATA's code list for Special handling codes is published as a separate document under 'Bibliotek/Kodlistor' on the Edifact Transport's web site.

Level 0/1 UNH BGM DTM TSR FTX CNT TOD<sup>2</sup> RFF<sup>3</sup> TDT<sup>7</sup> NAD<sup>9</sup> GID<sup>14</sup> EQD<sup>29</sup>UNT

Level 1 Cont. of segment group 14 GID C/999

Level 2 Start of segment group 17 MEA C/99

(GID) MEA

*Function:* A group of segments to specify measurements applicable to a goods item.**LEVEL 2 MEA MEASUREMENTS M/1****MEA***Function:* A segment to specify measurements, other than dimensions, applicable to a goods item.

Segment structure and code values	EDIFACT	ET	Note	Swedish translation/comments
6311 MEASUREMENT APPLICATION QUALIF. WT Weights VOL Volume	M an..3		<b>1</b>	Mängdapplikation, kval Vikt Volym
C502 MEASUREMENT DETAILS	C			
6313 Measurement dimension, coded G Gross weight	C an..3			Bruttovikt
6321 Measurement significance, coded	C an..3	X		
6155 Measurement attribute, coded	C an..3	X		
C174 VALUE/RANGE	C		<b>R</b>	
6411 Measure unit qualifier KGM Kilogram CMQ Cubic centimetre MTQ Cubic metre	M an..3			
6314 Measurement value	C n..18		<b>R</b>	Mängd, värde
6162 Range minimum	C n..18		<b>X</b>	
6152 Range maximum	C n..18		<b>X</b>	
7383 SURFACE/LAYER INDICATOR, CODED	C an..3		X	

**Example: MEA+WT+G+KGM:5768'****Gross weight of goods item is 5768 kg**

1 The MEA segment (group 17) is used for measurements on goods item level, e.g. for handling codes BIG or HEA. For totals referring to the whole consignment, see segment CNT.

Level 0/1 UNH BGM DTM TSR FTX CNT TOD<sup>2</sup> RFF<sup>3</sup> TDT<sup>7</sup> NAD<sup>9</sup> **GID**<sup>14</sup> EQD<sup>29</sup>UNT

Level 1 Cont. of segment group 14 GID C/999

Level 2 Start of segment group 18 DIM C/99

(GID) DIM

*Function:* A group of segments to specify dimensions applicable to a goods item.

## LEVEL 2 DIM DIMENSIONS M/1

DIM

*Function:* A segment to specify dimensions applicable to a goods item.

Segment structure and code values	EDIFACT	ET	Not	Swedish translation/comments
6145 DIMENSION QUALIFIER	M an..3			Dimensionstyp, kval
<b>2 Package dimensions</b>				<b>Gods/kollis mått</b>
9 Off-standard dimension general			1	Avvikelser från standard
C211 DIMENSIONS	M			
6411 Measure unit qualifier	M an..3			
MTR Meter				
6168 Length dimension	C n..15			Längddimension
6140 Width dimension	C n..15			Bredddimension
6008 Height dimension	C n..15			Höjddimension

**Example:** DIM+9+MTR:15:0,5:2'

1 The DIM segment is used either to specify the whole consignment (only one GID group is given in the message) or, as appropriate, to specify package dimensions per goods item, e.g. for handling code BIG.

Level 0/1 UNH BGM DTM TSR FTX CNT TOD<sup>2</sup> RFF<sup>3</sup> TDT<sup>7</sup> NAD<sup>9</sup> GID<sup>14</sup> EQD<sup>29</sup>UNT

Level 1 Cont. of segment group 14 GID C/999

Level 2 Start of segment group 20 PCI C/9

(GID) PCI

*Function:* A group of segments to specify marks and numbers of a goods item.**LEVEL 2 PCI PACKAGE IDENTIFICATION M/1****PCI***Function:* A segment to specify marks and numbers of a goods item.

Segment structure and code values	EDIFACT	ET	Note	Swedish translation/comments
<b>4233 MARKING INSTRUCTIONS, CODED</b>	<b>C an..3</b>	<b>R</b>	<b>1, 2</b>	<b>Märkningsinstruktion, kod</b>
<b>18 Carrier's instructions</b>				<b>Kolliidentitet, STE</b>
<b>20 Industry instructions</b>				<b>Kolliidentitet, branschstandard</b>
<b>24 Shipper assigned</b>				<b>Kolliidentitet, avsändarspecifik</b>
<b>28 Mark free text</b>				<b>Fri text</b>
<b>C210 MARKS &amp; LABELS</b>	<b>C</b>	<b>R</b>		
<b>7102 Shipping marks</b>	<b>M an..35</b>			<b>Kollimärke i form enligt 4233</b>
<b>7102 Shipping marks</b>	<b>C an..35</b>			
<b>7102 Shipping marks</b>	<b>C an..35</b>			
<b>7102 Shipping marks</b>	<b>C an..35</b>			
<b>7102 Shipping marks</b>	<b>C an..35</b>			
<b>7102 Shipping marks</b>	<b>C an..35</b>			
<b>7102 Shipping marks</b>	<b>C an..35</b>			
<b>7102 Shipping marks</b>	<b>C an..35</b>			
<b>7102 Shipping marks</b>	<b>C an..35</b>			
<b>7102 Shipping marks</b>	<b>C an..35</b>			
<b>7102 Shipping marks</b>	<b>C an..35</b>			
<b>7102 Shipping marks</b>	<b>C an..35</b>			
<b>8275 CONTAINER/PACKAGE STATUS, CODED</b>	<b>C an..3</b>	<b>X</b>		

**Example: PCI+18+373999991234567890'****Package identification according to STE is 373999991234567890**

1 Compared to the Nordic Guide, segment PCI has been opened for use to specify the markings of goods.

2 Goods may be marked in two ways, either as free text (shipping marks) or by means of a unique package number that can be bar coded. When the interchange agreement is established it should be determined which method is to be used.

Level 0/1 UNH BGM DTM TSR FTX CNT TOD<sup>2</sup> RFF<sup>3</sup> TDT<sup>7</sup> NAD<sup>9</sup> GID<sup>14</sup> EQD<sup>29</sup>UNT

**LEVEL 0 UNT MESSAGE TRAILER M/1 UNT**

*Function:* To end and check the completeness of a message.

Segment structure and code values	EDIFACT	ET	Not	Swedish translation/comments
0074 NUMBER OF SEGMENTS IN A MESSAGE	M n..6			
0062 MESSAGE REFERENCE NUMBER	M an..14			

**Example: UNT+134+MSGID002'**

## 2.4 MESSAGE EXAMPLE FOR IFTMBF - BOOKING

### Example 1

Booking of transport for a certain quantity of goods, within the scope of an established transport contract.

Information type	Data value
Document type	Booking request
Issue date	4 May 1998
Freight forwarder code	890
Freight forwarders reference	2244668800
Freight forwarders contact	Kontor X/A Person
Consignor	Tryckarn, Norra industriomr 34:2, port B
Consignor's contact	Avd L, telephone 070-12 34 56
Consignor's reference	98-033
Time for pickup of goods	5 May 1998, 14.00-16.00
Secured transport	Yes
Haulage to	Landvetter airport
Goods description	Printed matter
Volume	2.5 cubic metre
Gross weight	1100 kg

Excerpt from Edifact-file containing a booking with data according to the above example. The file is exchanged as a character string. It is presented here first, for readability reasons, as one segment per line, and then in an "interchange format" as an unedited string of characters.

```

...
UNH+1+IFTMBF:S:93A:UN:SE0023'
BGM+335'
DTM+137:19980504:102'
DTM+234:199805051400:203'
DTM+235:199805051600:203'
CNT+7:1100:KGM'
CNT+15:2.5:MTQ'
RFF+CU:98-033'
RFF+FF:2244668800'
TDT+10'
LOC+8+GOT:145:3'
NAD+FW+890::87'
CTA+IC+Kontor X/A Persson'
NAD+CZ+++Tryckarn+Norra industriomr 34?:2:port B'
CTA+IC+Avd L'
COM+070123456:TE'
GID+1'
FTX+AAA++++Printed matter'
UNT+19+1'
...

```

```
...UNH+1+IFTMBF:S:93A:UN:SE0023'BGM+335'DTM+137:19980504:102'DTM
+234:199805051400:203'DTM+235:199805051600:203'CNT+7:1100:KGM'CN
T+15:2.5:MTQ'RFF+CU:98-033'RFF+FF:2244668800'TDT+10'LOC+8+GOT:14
5:3'NAD+FW+890::87'CTA+IC+Kontor X/A Persson'NAD+CZ+++Tryckarn+N
orra industriomr 34?:2:port B'CTA+IC+Avd L'COM+070123456:TE'GID+
1'FTX+AAA+++Printed matter'UNT+19+1'...
```

## Example 2

Booking from freight forwarder to air terminal, where goods with estimated weight of 1,500 kilograms will arrive at the terminal in unsecured transport.

Information type	Data value
Document type	Booking request for air terminal services
Document date	1998-11-09
Freight forwarder code	80470011904
Consignor	Tryckarn, Norra Industriomr. 34:2, 400 00 Göteborg
Freight forwarder's reference	52278
Departure date/time, scheduled	1998-11-12
Secured transport provisions	No
Airport of destination	Heathrow
Goods description	Printed matter
Gross weight	1500 kg

Excerpt from Edifact-file containing a booking with data according to the above example. The file is exchanged as a character string. It is presented here first, for readability reasons, as one segment per line, and then in an "interchange format" as an unedited string of characters.

```
...
UNH+1+IFTMBF:S:93A:UN:SE0027'
BGM+335+52278+9'
DTM+137:19981109:102'
DTM+189:19981112:102'
TSR++Z06'
CNT+7:1500:KGM'
TDT+20'
LOC+8+LHR:145:3'
NAD+FW+80470011904::3'
NAD+CZ+++Tryckarn+Norra Industriomr. 34?:2+Göteborg++400 00+SE'
GID+1'
FTX+AAA+++Printed matter'
UNT+14+1'
...
```

```
...UNH+1+IFTMBF:S:93A:UN:SE0027'BGM+335+52278+9'DTM+137:19981109
:102'DTM+189:19981112:102'TSR++Z06'CNT+7:1500:KGM'TDT+20'LOC+8+L
HR:145:3'NAD+FW+80470011904::3'NAD+CZ+++Tryckarn+Norra Industrio
mr. 34?:2+Göteborg++400 00+SE'GID+1'FTX+AAA+++Printed matter'UNT
+14+1'...
```