

# Edifact-meddelanden mellan flygterminal, speditör och åkeri

Utgiven av



Det här dokumentet är framtaget som vägledning vid införande av Edifact-meddelanden för informationsutväxling om godssändningar mellan flygterminal, speditör och åkeri. Dokumentet omfattar informationsflödena vid **export** och **import**. Följande kapitel ingår:

1. Introduktion och meddelandeöversikt
2. Bokningar/föraviseringar med IFTMBF
3. Bokningsbekräftelser med IFTMBC
- 4. Instruktioner/slutaviseringar med IFTMIN**
5. Statusmeddelanden med IFTSTA

Första kapitlet beskriver meddelandescenarier för export- resp importsändningar och informationsinnehållet för meddelandena i dessa scenarier. Efterföljande kapitel specificerar formaten vid användning av Edifact-standarderna för meddelandeutväxlingen.

Meddelandena är baserade på Edifact Transports tidigare arbeten med Pharos EDI specifikation (som utgår från Edifactkatalog S.93A) resp implementeringsguiden för statusmeddelanden (Edifactkatalog D.94A).

Kapitlen kan var för sig hämtas hem från Edifact Transports webb-adress:

**[www.edifact-transport.se](http://www.edifact-transport.se)**

## Dokumentstatus

Edifact Transport, som är ett dotterföretag till Transportindustriförbundet, har tillsammans med Cargo Center tagit fram dessa specifikationer. I arbetsgruppen, som rekommenderar införande av EDI enligt specifikationerna, har följande företag deltagit: ACE, CSC, Cargo Center Sweden, Conrab Data som representerar AGL och MFT, Refanut, SACT, SAS Cargo, Schenker, Wilson, TradeVision samt Edifactexperter från Edifact Transport.

## 4. Instruktioner/slutaviseringar med IFTMIN

### Användaranvisning för

F - Slutavisering flygterminal,  
K - Avisering importsändning,  
M - Överlåtelse/kvittens, och  
P - Leveransinstruktion

vid användning av IFTMIN  
enligt UN Edifact Standard Directory S.93A, Pharos  
kravspecifikation och Nordic Implementation Guide.

Not. För funktionell beskrivning av meddelandena F - Slutavisering flygterminal, K - Avisering importsändning, M - Överlåtelse/kvittens, och P - Leveransinstruktion samt dessas samband med andra meddelanden hänvisas till kapitel 1.

### INDEX:

---

4.1	Funktionella termer	4-3
4.2	Branching diagram IFTMIN - Forwarding instructions	4-5
4.3	Guidelines for use of message segments	4-9
4.4	Message example	4-38

## 4.1 FUNKTIONELLA TERMER

### Förklaring:

I kolumnen 'Status' anger "M" obligatorisk uppgift, "C" villkorlig uppgift, "-" att uppgiften ej är tillämplig.

Kolumnen 'Referens till Edifact-segm' hänvisar till uppgiftens placering i nedan beskrivna EDIFACT-meddelande.

### Uppgifter på sändningsnivå

Referenser:	Status medd F	Status medd K	Status medd M	Status medd P	Referens till Edifact-segm
Sändnings-id	M	C	C	M	RFF/FF
AWB-nummer	M	M	M	M	RFF/AWB
HWB-nummer	C <sup>1)</sup>	C <sup>1)</sup>	C <sup>1)</sup>	C <sup>1)</sup>	RFF/HWB
Tull-ID	-	-	-	C <sup>4)</sup>	RFF/ABT
Godsmottagarens referens	-	-	-	C <sup>5)</sup>	RFF/AAO

### Datum och tider:

Dokument/meddelandedatum	M	M	M	M	DTM/137
Hämtningstidpunkt	-	C	C	C	DTM/200
Leveranstidpunkt, begärd	-	-	-	C <sup>5)</sup>	DTN/2
Leveranstidpunkt, tidigaste	-	-	-	C <sup>5)</sup>	DTM/71
Leveranstidpunkt, senaste	-	-	-	C <sup>5)</sup>	DTM/74
Transportdag	-	-	-	C <sup>5)</sup>	DTM/143
Planerad ankomsttid till terminal (inhämtning)	C	-	-	-	DTM/232
Planerad avgångstid (flygtransport)	C	-	-	-	DTM/189

### Parter:

Speditör, nummer	M	M	M	M	NAD/FW
Överlåtelse till (part)	-	C	C	-	NAD/TT
Godsavsändare <sup>2)</sup> , namn och adress	M	-	-	-	NAD/CZ
Godsmottagare, namn och adress	M	-	-	C <sup>5)</sup>	NAD/CN

### Transport och orter:

Transportskede (för-/huvud-/eftertransport)	M	M	M	M	TDT
Slutdestination AWB (IATA-kod)	M	-	-	-	TDT-LOC/8
Slutlig destination HWB (IATA-kod)	C	-	-	-	TDT-LOC/83
Via-destination (IATA-kod)	C	-	-	-	TDT-LOC/13
Säkerhetsklassning	M	-	-	-	TSR/Z05, Z06
Åkeri, namn	C <sup>3)</sup>	C	C	M	TDT
Bilens turnummer/namn (enligt åkeriet)	C <sup>3)</sup>	-	-	-	TDT
Flightnummer (huvudtransport)	C	-	-	-	TDT

### Sändningsinformation:

Begäran om utskrift av etikett/label	C	-	-	C <sup>5)</sup>	TSR/Z07
Begäran om utskrift av fraktsedel	-	-	-	C <sup>5)</sup>	TSR/Z08
Delleverans tillåts	-	-	-	C	TSR/9
Typ av gods (enligt IATAs kodlista)	M	M	M	M	TSR
Sändningens bruttovikt + enhet	M	M	M	M	CNT/7
Sändningens volym + enhet	M	C	C	C	CNT/15
Totalt antal kollin	M	M	M	M	CNT/11
Godsets tullkod	C	C	-	-	FTX/ABL
Kompletterande information om sändningen	C	C	-	-	FTX

<sup>1)</sup> Om HWB-nummer tilldelats godssändningen

<sup>2)</sup> Godsavsändare eller speditör

<sup>3)</sup> Skall anges för säkerhetsklassad sändning.

<sup>4)</sup> Anges om ej EU-gods

<sup>5)</sup> Anges om terminalen gör fraktsedelsutskrift

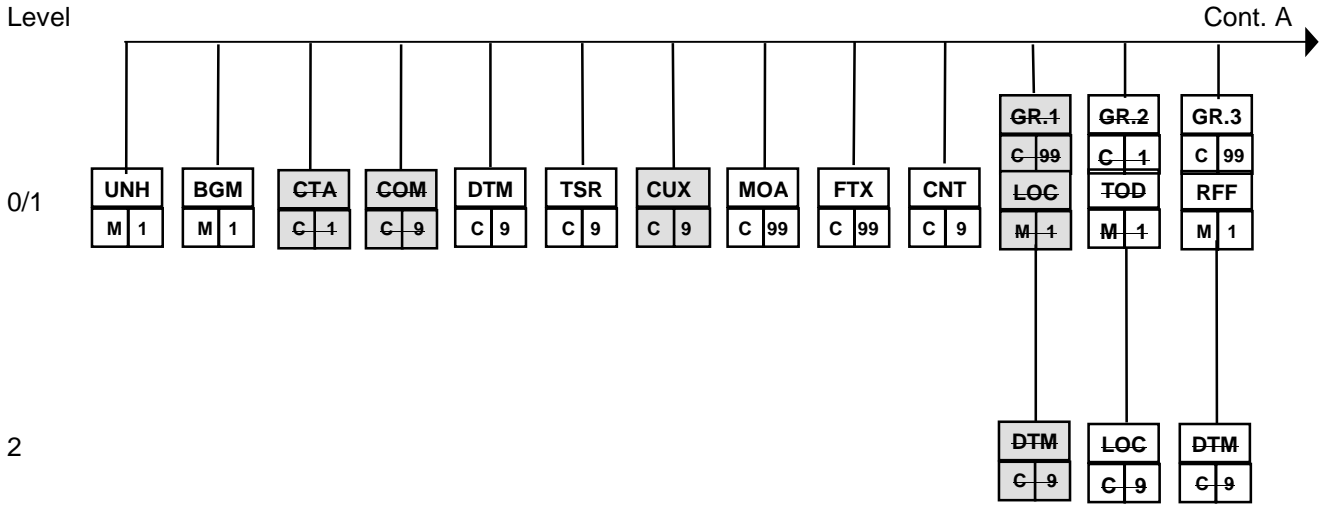
	Status medd F	Status medd K	Status medd M	Status medd P	Referens till Edifact-segm
<b>Uppgifter på sändningsnivå (rapporteras som en enda godspost)</b>					
Godsmärkning hela sändningen	C	-	-	C	GID-PCI
Varubenämning	C	-	-	-	GID-FTX/AAA
Dimensioner	C	-	-	C	GID-DIM
<b>Uppgifter om enskilda kollin</b>					
Kolliidentitet (om unika ID tilldelats kolli) <sup>1)</sup>	C	-	-	C	GID-PCI
Typ av gods (undantagsrapportering)	C	-	-	C	GID-FTX/TDT
Vikt (undantagsrapportering - typ BIG och HEA)	C	-	-	C	GID-MEA
Volym (undantagsrapportering - typ BIG och HEA)	C	-	-	C	GID-MEA
Godsmärkning (undantagsrapportering)	C	-	-	C	GID-PCI
Varubenämning (undantagsrapportering)	C	-	-	-	GID/FTX/AAA
Dimensioner (undantagsrapportering - typ BIG)	C	-	-	C	GID-DIM
<b>Fraktberäkningsuppgifter</b>					
Fraktsedelns valuta	C	-	-	-	CUX
Deklarerade värden för gods	C	C	-	C <sup>2)</sup>	MOA
Efterkrav, utlägg m m	-	-	-	C <sup>2)</sup>	MOA
Prepaid/collect	C	C	-	C <sup>2)</sup>	CPI
Fördelning fraktkostnader	C	C	-	-	TCC-MOA
IATA tariffklass	C	C	-	-	GID-TCC
Fraktgrundande vikt	C	-	-	-	GID-TCC-QTY
Belopp för frakt/avgiftsberäkning	C	-	-	-	GID-TCC-PRI
Avgiftsbelopp för godspost	C	C	-	-	GID-TCC-MOA

<sup>1)</sup> Finns unika kolliidentiteter (ex enligt Svensk Transportetikett, STE) används dessa istället för godsmärkning. När unika kolli-id saknas, alltså vid traditionell märkning av gods, rapporteras godsmärkningen på sändningsnivå. I undantagssituationer kan ibland sådan godsmärkning ges också på kollinivå, t ex om kolli löpnumrerats inom sändningen.

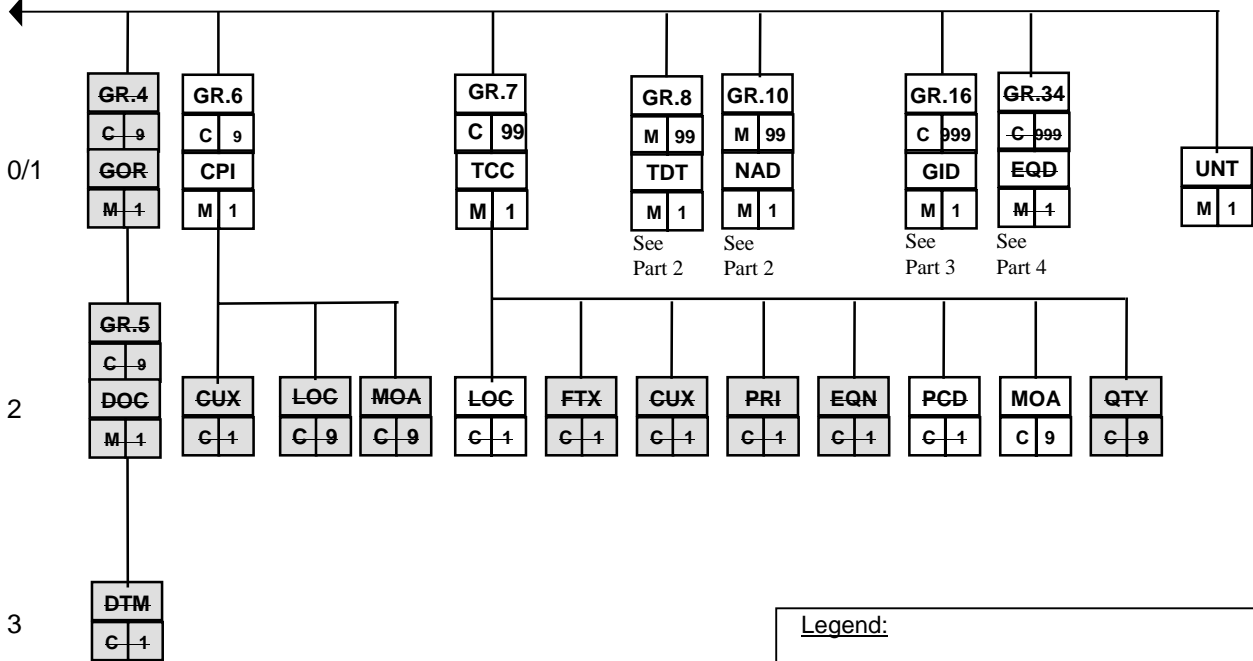
<sup>2)</sup> Anges om terminalen gör fraktsedelsutskrift

## 4.2 BRANCHING DIAGRAM IFTMIN, 1(4)

Part 1 Message level

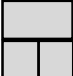


A. - continuation



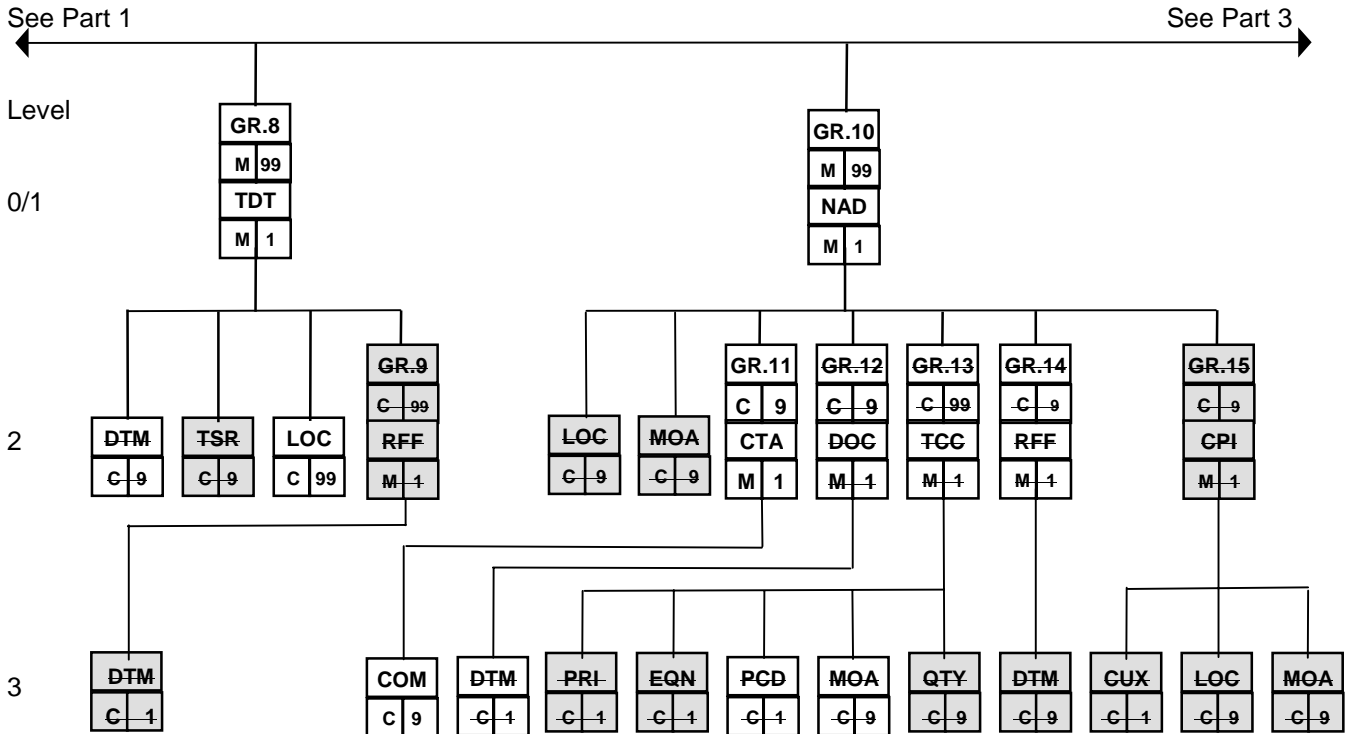
Legend:

This diagram shows all the segments in the message, according to directory S.93A. **Segments where the text has been crossed out are not used in this subset.**

 Segments shaded grey are not included in the Nordic Implementation Guide for IFTM Messages

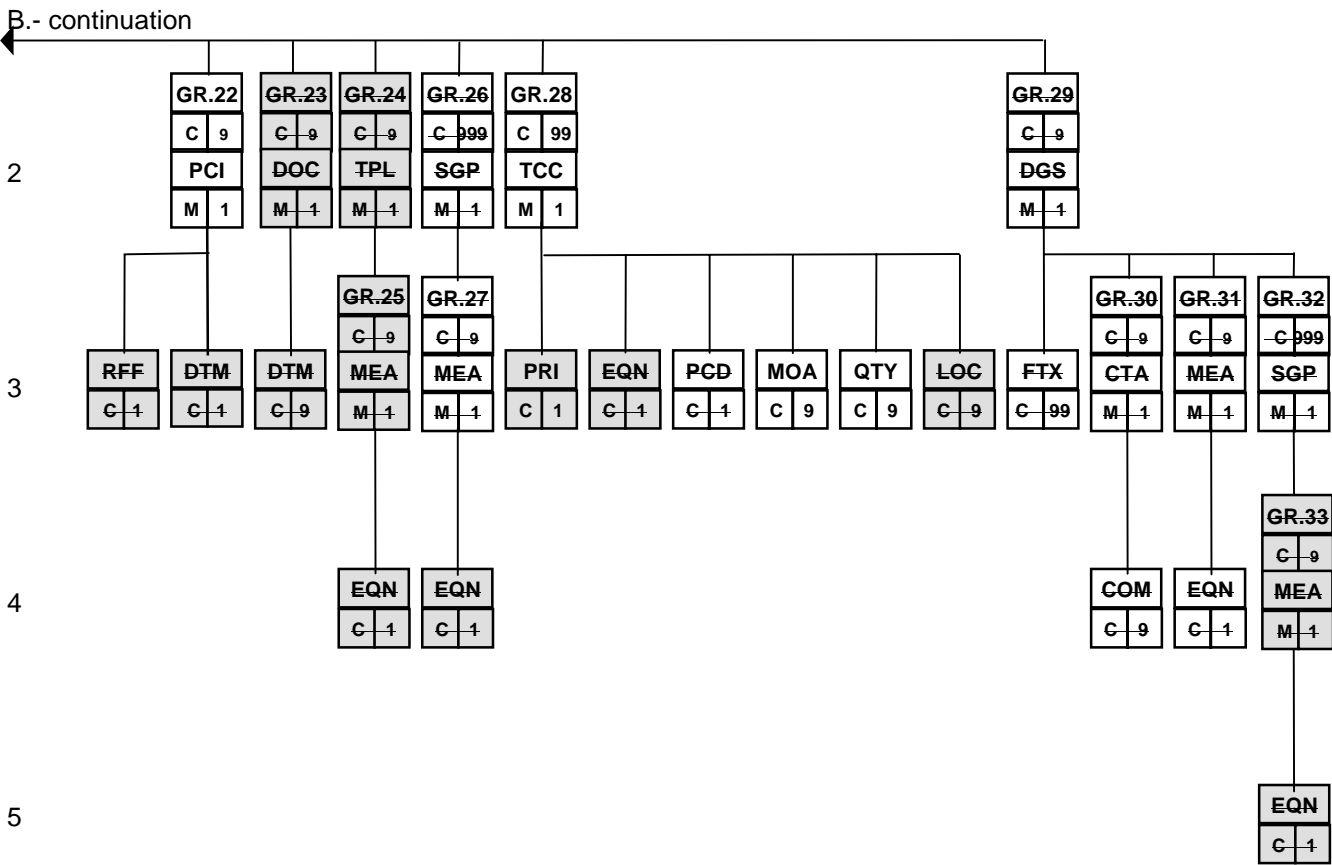
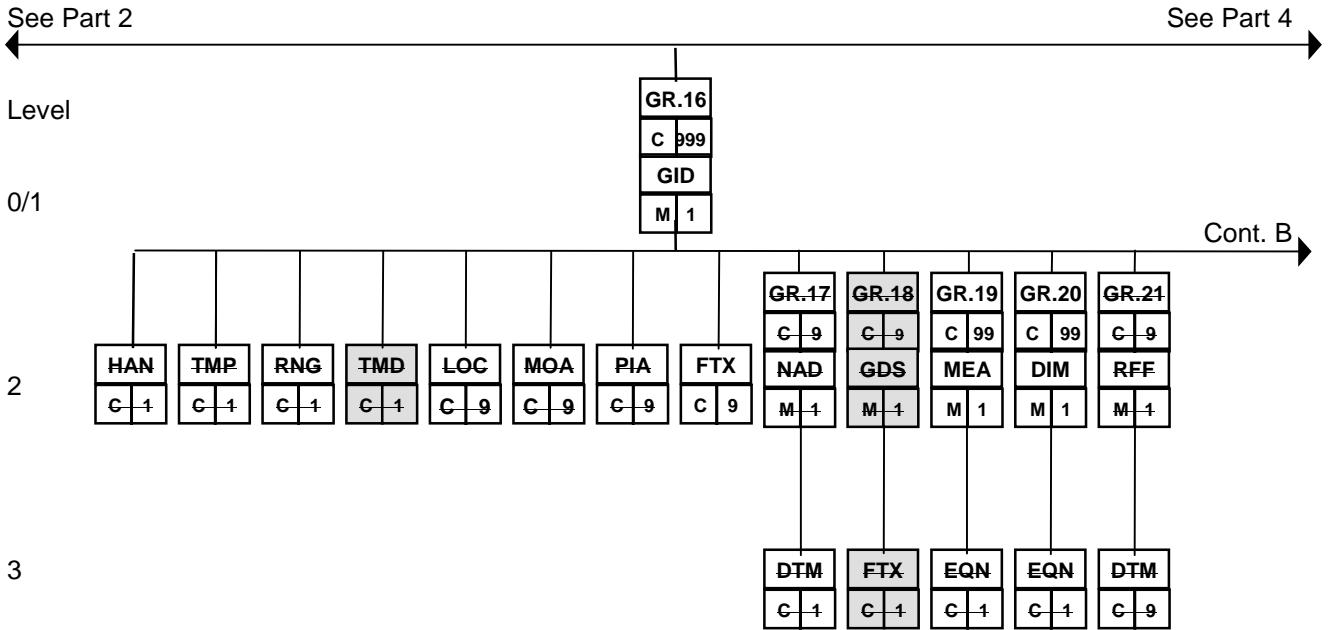
## Branching diagram IFTMIN, 2 (4)

Part 2 Group 8 = TDT and Group 10 = NAD



### Branching diagram IFTMIN, 3 (4)

Part 3 Group 16 = GID





## 4.3 GUIDELINES FOR THE USE OF SEGMENTS

Level 0/1 **UNH** BGM DTM...CNT TOD<sup>2</sup> RFF<sup>3</sup> CPI<sup>6</sup> TCC<sup>7</sup> TDT<sup>8</sup> NAD<sup>10</sup> GID<sup>16</sup> EQD<sup>34</sup> UNT

**LEVEL 0 UNH MESSAGE HEADER M/1 UNH**

*Function:* To head, identify and specify a message.

Segment structure and code values	EDIFACT	ET	Note	Swedish translation/comments
0062 MESSAGE REFERENCE NUMBER	M an..14		1	Referens till meddelande
S009 MESSAGE IDENTIFIER	M			
0065 Message type identifier	M an..6			Meddelandetyp
IFTMIN Instruction				
0052 Message type version number	M an..3			Meddelandetyps version
S Standard message				
0054 Message type release number	M an..3			Meddelandes utgåvenummer
93A				
0051 Controlling agency	M an..2			Utfärdande organ
UN United nations				
0057 Association assigned code	C an..6	<b>R</b>		Användargrups kod
<b>SE0022</b>			2	<b>Används för Avisering import, Överlåtelse/kvittens resp Leveransinstruktion</b>
<b>SE0028</b>			3	<b>Använd för Slutavisering till flygterminal</b>
0068 COMMON ACCESS REFERENCE	C an..35	X		
S010 STATUS OF THE TRANSFER	C	X		
0070 Sequence message transfer number	M n..2	X		
0073 First/last sequence message transfer indication message transfer number	C a1	X		

**Example:** UNH+MSGID001+IFTMIN:S:93A:UN:SE0028'

1 The count of messages in an interchange. Normal use is that the first message in an interchange is set to 1, the count is then incremented by 1 for each message in the interchange. Some EDI software may use this data element for sequential count of messages over a longer period of time, e.g. starting at 1 every new year.

2 Based on the Nordic Implementation Guide for IFTM Messages, version 1, IFTMIN/NIG001.

3 Compared to the Nordic Implementation Guide for IFTM Messages this subset additionally makes use of segment CUX and group 28/PRI.

Level 0/1 UNH **BGM** DTM...CNT TOD<sup>2</sup> RFF<sup>3</sup> CPI<sup>6</sup> TCC<sup>7</sup> TDT<sup>8</sup> NAD<sup>10</sup> GID<sup>16</sup> EQD<sup>34</sup> UNT**LEVEL 0 BGM BEGINNING OF MESSAGE M/1****BGM***Function:* To indicate the type and function of a message and to transmit the identifying number.

Segment structure and code values	EDIFACT	ET	Note	Swedish translation/comments
C002 DOCUMENT/MESSAGE NAME	C	<b>R</b>		
1001 Document/message name, coded	C an..3	<b>R</b>		Dokument-/Meddelandenamn, kod
<b>630 Shipping note</b>				<b>Instruktion godssändning</b>
1131 Code list qualifier	C an..3	X		
3055 Code list responsible agency, coded	C an..3	X		
1000 Document/message name	C an..35	X		
1004 DOCUMENT/MESSAGE NUMBER	C an..35		1	Dokument-/meddelandennummer
1225 MESSAGE FUNCTION, CODED	C an..3		2	Meddelandefunktion, kod
1 Cancellation				Annullering av tidigare meddelande
5 Replace				Ersätter tidigare meddelande
9 Original				Original
4343 RESPONSE TYPE, CODED	C an..3	X		

**Example: BGM+630++5'**

1 Primary reference for this message subset, is freight forwarder's reference number. References should preferentially be given in segment RFF, where they can be qualified.

2 Cancellation and replacement may only be relevant if the status of the booking in the partner's system is known. Implementation of such functions should be combined with monitoring of confirmation messages in the application.

Level 0/1 UNH BGM DTM...CNT TOD<sup>2</sup> RFF<sup>3</sup> CPI<sup>6</sup> TCC<sup>7</sup> TDT<sup>8</sup> NAD<sup>10</sup> GID<sup>16</sup> EQD<sup>34</sup> UNT**LEVEL 1 DTM DATE/TIME/PERIOD C/9****DTM**

Function: A segment to indicate a date and time applying to the whole message, e.g., date and time of document issue.

Segment structure and code values	EDIFACT	ET	Note	Swedish translation/comments
C507 DATE/TIME/PERIOD	M			
2005 Date/time/period qualifier	M an..3			Tidsangivelser, kval
2 Delivery date/time, requested				Begärd leveranstidpunkt
71 Delivery date/time, requested for (after and including)				Tidigaste leveranstidpunkt, begärd
74 Delivery date/time, requested for (prior to and including)				Senaste leveranstidpunkt, begärd
<b>137 Document/message date/time</b>				<b>Utfärdandedatum</b>
143 Acceptance date/time of goods				Övertagandetidpunkt
<b>189 Departure date/time, scheduled</b>				<b>Beräknad avgångstid (flyg)</b>
200 Pick-up/collection date/time of cargo				Hämtningstidpunkt för gods
<b>232 Arrival date/time, scheduled</b>				<b>Beräknad ankomst förtransport</b>
2380 Date/time/period	C an..35	<b>R</b>		
2379 Date/time/period format qualifier	C an..3		1	
101 YYMMDD				ÅÅMMDD
102 CCYYMMDD				ÅÅÅÅMMDD
201 YYMMDDHHMM				ÅÅMMDDTTMM
203 CCYYMMDDHHMM				ÅÅÅÅMMDDTTMM

**Example: DTM+137:19940503:102'****Document issued on 3 May, 1994**

1 The date/time/period formats that include digits for century are recommended for information interchange, however systems should be capable of handling all formats listed.

Level 0/1 UNH BGM DTM...CNT TOD<sup>2</sup> RFF<sup>3</sup> CPI<sup>6</sup> TCC<sup>7</sup> TDT<sup>8</sup> NAD<sup>10</sup> GID<sup>16</sup> EQD<sup>34</sup> UNT**LEVEL 1 TSR TRANSPORT SERVICE REQUIREMENTS C/9****TSR***Function: To specify the contract and carriage conditions and service and priority requirements for the transport.*

Segment structure and code values	EDIFACT	ET	Note	Swedish translation/comments
C536 CONTRACT AND CARRIAGE CONDITION	C	X		
4065 Contract and carriage condition, coded	M an..3	X		
1131 Code list qualifier	C an..3	X		
3055 Code list responsible agency, coded	C an..3	X		
C233 SERVICE	C	R		
7273 Service requirement, coded	M an..3		1	Servicebegäran, kod
<b>9 Partial shipment allowed</b>				<b>Delskeppning/delleverans tillåts</b>
<b>Z05 Transport under security arrangement</b>				<b>Säkerhetsklassad transport</b>
<b>Z06 Transport <u>not</u> under security arrangement</b>				<b>Ej säkerhetsklassad transport</b>
<b>Z07 Request for printout of label</b>				<b>Begäran om utskrift av etikett/label</b>
<b>Z08 Request for printout of road waybill</b>				<b>Begäran om utskrift av fraktsedel</b>
1131 Code list qualifier	C an..3	X		
3055 Code list responsible agency, coded	C an..3	X		
7273 Service requirement, coded	C an..3			Servicebegäran, kod
See list of code values for first occurrence of 7273				
1131 Code list qualifier	C an..3	X		
3055 Code list responsible agency, coded	C an..3	X		
C537 TRANSPORT PRIORITY	C	X		
4219 Transport priority, coded	M an..3	X		
1131 Code list qualifier	C an..3	X		
3055 Code list responsible agency, coded	C an..3	X		
C703 NATURE OF CARGO	C	R		
7085 Nature of cargo, coded	M an..3			Godstyp, kod
<b>Codes according to IATA's code list</b>			2	<b>Typ av gods</b>
1131 Code list qualifier	C an..3	X		
3055 Code list responsible agency, coded	C an..3			
<b>3 IATA</b>				

**Example: 'TSR++Z05++CLD'****Cold goods, in secured transport chain**

1 Statement regarding the use of secured/unsecured transport chain is obligatory in this message subset.

2 IATA's code list for Special handling codes is published as a separate document under 'Bibliotek/Kodlistor' on the Edifact Transport's web site.

Level 0/1 UNH BGM DTM...CNT TOD<sup>2</sup> RFF<sup>3</sup> CPI<sup>6</sup> TCC<sup>7</sup> TDT<sup>8</sup> NAD<sup>10</sup> GID<sup>16</sup> EQD<sup>34</sup> UNT

**LEVEL 1 CUX CURRENCIES C/9 CUX**

Function: A segment to indicate default currencies and exchange rates.

Segment structure and code values	EDIFACT	ET	Note	Swe. translation and comments
<b>C504 CURRENCY DETAILS</b>	<b>C</b>	<b>R</b>	<b>1</b>	
6347 Currency details qualifier	<b>M an..3</b>			
4 Transport document currency				<b>Fraktsedelns valuta</b>
6345 Currency, coded	<b>C an..3</b>	<b>R</b>		<b>Valuta</b>
Use ISO currency code				
6343 Currency qualifier	<b>C an..3</b>	<b>X</b>		
6348 Currency rate base	<b>C n..4</b>	<b>X</b>		
<b>C504 CURRENCY DETAILS</b>	<b>C</b>	<b>X</b>		
6347 Currency details qualifier	<b>M an..3</b>	<b>X</b>		
6345 Currency, coded	<b>C an..3</b>	<b>X</b>		
6343 Currency qualifier	<b>C an..3</b>	<b>X</b>		
6348 Currency rate base	<b>C n..4</b>	<b>X</b>		
<b>5402 RATE OF EXCHANGE</b>	<b>C n..12</b>	<b>X</b>		
<b>6341 CURRENCY MARKET EXCHANGE, CODED</b>	<b>C an..3</b>	<b>X</b>		

<b>Example: CUX+4:SEK'</b>	<b>Air waybill specified in Swedish krona</b>
----------------------------	---

1 Message subset UNH/0057='SE0028': Compared to the Nordic Implementation Guide for IFTM Messages segment CUX has been opened for use.

Level 0/1 UNH BGM DTM...CNT TOD<sup>2</sup> RFF<sup>3</sup> CPI<sup>6</sup> TCC<sup>7</sup> TDT<sup>8</sup> NAD<sup>10</sup> GID<sup>16</sup> EQD<sup>34</sup> UNT**LEVEL 1 MOA MONETARY AMOUNT C/99****MOA**

Function: A segment to indicate a monetary value for entire consignment, e.g. insured value, invoice amount, disbursements, etc.

Segment structure and code values	EDIFACT	ET	Note	Swe. translation and comments
C516 MONETARY AMOUNT	M			
5025 Monetary amount type qualifier	M an..3			Beloppstyp, kval
22 Cash on delivery amount				Efterkravsbelopp
43 Declared total Customs value				Dekl. tullvärde för sändningen
44 Declared value for carriage				Deklarerat transportvärde
50 Disbursements - Delivery against document amount				Förskott (utlägg)
94 No amount of insurance				
95 No declared value for carriage				
96 No value declared for Customs				
114 Total prepaid amount				Förbetalt belopp
151 Value insured				Försäkringsvärde
5004 Monetary amount	C n..18			Belopp (utelämnas för koderna 94, 95 och 96)
6345 Currency, coded	C an..3			Valutakod enligt ISO 4217
6343 Currency qualifier	C an..3	X		
4405 Status, coded	C an..3	X		

**Example: MOA+151:27500'****Insurance value is 27,500 (in currency as stated in segment CUX)**

Level 0/1 UNH BGM DTM...CNT TOD<sup>2</sup> RFF<sup>3</sup> CPI<sup>6</sup> TCC<sup>7</sup> TDT<sup>8</sup> NAD<sup>10</sup> GID<sup>16</sup> EQD<sup>34</sup> UNT**LEVEL 1 FTX FREE TEXT C/99****FTX**Function: To provide free form or coded text information.

Segment structure and code values	EDIFACT	ET	Note	Swe. translation and comments
4451 TEXT SUBJECT QUALIFIER	M an..3			Textämnen, kval
AAW Letter of credit information				
ABL Government (Customs) information				
ABN Accounting information				
OSI Other service information				
SPH Special handling information				
SSR Special service request				
4453 TEXT FUNCTION, CODED	C an..3	X		
C107 TEXT REFERENCE	C			
4441 Free text, coded	M an..3			Tullstatuskoder vid 4451=ABL
<b>C Goods in free circulation</b>				
<b>T1 Goods outside the EU under Customs control</b>				
<b>T2 EC goods not in free circulation</b>				
<b>TD Goods already under formal transit procedure</b>				
1131 Code list qualifier	C an..3	X		
3055 Code list responsible agency, coded	C an..3			
18 ECE/Efta Customs				
C108 TEXT LITERAL	C			
4440 Free text	M an..70			
4440 Free text	C an..70			
4440 Free text	C an..70			
4440 Free text	C an..70			
4440 Free text	C an..70			
3453 LANGUAGE, CODED	C an..3	X		

**Example: FTX+OSI+++Cargo aircraft only'**

Level 0/1 UNH BGM DTM...CNT TOD<sup>2</sup> RFF<sup>3</sup> CPI<sup>6</sup> TCC<sup>7</sup> TDT<sup>8</sup> NAD<sup>10</sup> GID<sup>16</sup> EQD<sup>34</sup> UNT**LEVEL 1 CNT CONTROL TOTAL C/9 CNT**Function: A segment to specify totals for a consignment.

Segment structure and code values	EDIFACT	ET	Note	Swedish translation/comments
C270 CONTROL	M			
6069 Control qualifier	M an..3			Kontrolltotaler, kval
7 Total gross weight				Total bruttovikt
11 Total number of packages				Totalt antal kollin
15 Total consignment, cube				Total volym
6066 Control value	M n..18			Kontrolltal, värde
6411 Measure unit qualifier	C an..3			
KGM Kilogram				
CMQ Cubic centimetre				
MTQ Cubic metre				
PCE Pieces				

**Example:** CNT+15:7.525:MTQ'**Total volume for consignment**

Level 0/1 UNH BGM DTM...CNT TOD<sup>2</sup> **RFF**<sup>3</sup> CPI<sup>6</sup> TCC<sup>7</sup> TDT<sup>8</sup> NAD<sup>10</sup> GID<sup>16</sup> EQD<sup>34</sup> UNT

**Level 1 Start of segment group 3 RFF C/99** **RFF**

*Function:* A group of segments containing a reference and constants which apply to the entire message.

**LEVEL 1 RFF REFERENCE M/1** **RFF**

*Function:* A segment to express a reference which applies to the entire message such as: the document/message number that is to be updated by this very message (according to data element 1225 Message Function, Coded in segment BGM), booking reference, order number, etc.

Segment structure and code values	EDIFACT	ET	Note	Swedish translation/comments
C506 REFERENCE	M			
1153 Reference qualifier	M an..3			Referenstyp, kval
AAO Consignee's shipment reference number				Godsmottagarens referens
<b>ABT Customs declarations number</b>				<b>Tull-id</b>
AWB Air waybill number				AWB-nummer
FF Freight forwarder's reference number			<b>1</b>	Speditörens referensnummer
HWB House waybill number				House AWB-nummer
1154 Reference number	C an..35	<b>R</b>		Referensnummer
1156 Line number	C an..6	X		
4000 Reference version number	C an..35	X		

**Example: RFF+FF+DOCID001'** **Freight forwarder's reference number is DOC ID001**

1 If stated in RFF, this reference shall have the same meaning as BGM/1004

Level 0/1 UNH BGM DTM...CNT TOD<sup>2</sup> RFF<sup>3</sup> CPI<sup>6</sup> TCC<sup>7</sup> TDT<sup>8</sup> NAD<sup>10</sup> GID<sup>16</sup> EQD<sup>34</sup> UNT

**Level 1 Start of segment group 6 CPI C/9** **CPI**

**LEVEL 1 CPI CHARGE PAYMENT INSTRUCTION M/1** **CPI**

*Function: A segment to indicate default charge methodology.*

Segment structure and code values	EDIFACT	ET	Note	Swe. translation and comments
C229 CHARGE CATEGORY	C			
5237 Charge category, coded	M an..3			Fraktbetalningsalternativ, kod
<b>12 Other charges</b>				
<b>16 Weight valuation charges</b>				<b>Viktbaseerade avgifter</b>
1131 Code list qualifier	C an..3	X		
3055 Code list responsible agency, coded	C an..3	X		
C231 METHOD OF PAYMENT	C			
4215 Transport charges method of payment, coded	M an..3			
1131 Code list qualifier	C an..3	X		
3055 Code list responsible agency, coded	C an..3	X		
4237 PREPAID/COLLECT INDICATOR, CODED	C an..3			Betalningsindikator, kod
C Collect				Mottagaren betalar
P Prepaid				Avsändaren betalar

<b>Example: CPI+16++P'</b> <b>CPI++PP'</b>	<b>Charge prepaid</b>
---	-----------------------

Level 0/1 UNH BGM DTM...CNT TOD<sup>2</sup> RFF<sup>3</sup> CPI<sup>6</sup> TCC<sup>7</sup> TDT<sup>8</sup> NAD<sup>10</sup> GID<sup>16</sup> EQD<sup>34</sup> UNT

**Level 1 Start of segment group 7 TCC C/99** **TCC**

**LEVEL 1 TCC TRANSPORT CHARGE/RATE CALCULATIONS M/1** **TCC**

*Function:* To specify charges associated with the transport.

Segment structure and code values	EDIFACT	ET	Note	Swe. translation and comments
C200 CHARGE	C			
8023 Freight and charges identification	C an..17			Frakter och avgifter, kod
Other charge code list				IATA frakt- och avgiftskoder
1131 Code list qualifier	C an..3	X		
3055 Code list responsible agency, coded	C an..3			
3 IATA				
8022 Freight and charges	C an..26	X		
4237 Prepaid/collect indicator, coded	C an..3			
C Collect				Mottagaren betalar
P Prepaid				Avsändaren betalar
C203 RATE/TARIFF CLASS	C	X		
5243 Rate/tariff class identification	M an..9	X		
1131 Code list qualifier	C an..3	X		
3055 Code list responsible agency, coded	C an..3	X		
5242 Rate/tariff class	C an..35	X		
5275 Supplementary rate/tariff basis identification	C an..6	X		
1131 Code list qualifier	C an..3	X		
3055 Code list responsible agency, coded	C an..3	X		
5275 Supplementary rate/tariff basis identification	C an..6	X		
1131 Code list qualifier	C an..3	X		
3055 Code list responsible agency, coded	C an..3	X		
C528 COMMODITY/RATE DETAIL	C	X		
7357 Commodity/rate identification	C an..18	X		
1131 Code list qualifier	C an..3	X		
3055 Code list responsible agency, coded	C an..3	X		
C554 RATE/TARIFF CLASS DETAIL	C	X		
5243 Rate/tariff class identification	M an..9	X		
1131 Code list qualifier	C an..3	X		
3055 Code list responsible agency, coded	C an..3	X		

<b>Example:</b> TCC+SU::3::P	<b>Sender pays for Surface charges</b>
------------------------------	--

Level 0/1 UNH BGM DTM...CNT TOD<sup>2</sup> RFF<sup>3</sup> CPI<sup>6</sup> TCC<sup>7</sup> TDT<sup>8</sup> NAD<sup>10</sup> GID<sup>16</sup> EQD<sup>34</sup> UNT

**Level 1** Cont. of segment group 7 TCC C/99 **TCC**

**LEVEL 2 MOA MONETARY AMOUNT C/9 MOA**

*Function:* A segment to specify a monetary amount, such as prepaid amount, discount etc.

Segment structure and code values	EDIFACT	ET	Note	Swe. translation and comments
C516 MONETARY AMOUNT	M			
5025 Monetary amount type qualifier	M an..3			Beloppstyp, kval
100 Other charges due agent				
153 Weight charge				
5004 Monetary amount	C n..18			Belopp
6345 Currency, coded	C an..3			
6343 Currency qualifier	C an..3	X		
4405 Status, coded	C an..3	X		

**Example: MOA+100:475.25'**

Level 0/1 UNH BGM DTM...CNT TOD<sup>2</sup> RFF<sup>3</sup> CPI<sup>6</sup> TCC<sup>7</sup> **TDT**<sup>8</sup> NAD<sup>10</sup> GID<sup>16</sup> EQD<sup>34</sup> UNT

**Level 1 Start of segment group 8 TDT M/99** **TDT**

*Function:* A group of segments to indicate details of the movement of goods such as mode and means of transport, locations, departure, and arrival date(s) and time(s).

**LEVEL 1 TDT DETAILS OF TRANSPORT M/1** **TDT**

*Function:* To specify the transport details such as mode of transport, means of transport, its conveyance reference number and the identification of the means of transport.

Segment structure and code values	EDIFACT	ET	Note	Swedish translation/comments
8051 TRANSPORT STAGE QUALIFIER	M an..3			Transportskede, kod
10 Pre-carriage transport			1	Förtransport
20 Main-carriage transport			2	Huvudtransport
<b>21-24 Main carrier sequence</b>			<b>3</b>	<b>Alternativ till 20=huvudtransport</b>
30 On-carriage transport			4	Eftertransport
8028 CONVEYANCE REFERENCE NUMBER	C an..17	<b>R</b>	5	
C220 MODE OF TRANSPORT	C			
8067 Mode of transport, coded	C an..3			Transportsätt, kod
3 Road transport				Väg
4 Air				Flyg
5 Mail/parcel service				Post/kurir
8066 Mode of transport	C an..17	X		
C228 TRANSPORT MEANS	C	X		
8179 Type of means of transport identification	C an..8	X		
8178 Type of means of transport	C an..17	X		
C040 CARRIER	C			Transportör
3127 Carrier identification	C an..17			
1131 Code list qualifier	C an..3	<b>X</b>		
3055 Code list responsible agency, coded	C an..3	<b>X</b>		
3128 Carrier name, Free form	C an..35		6	
8101 TRANSIT DIRECTION, CODED	C an..3	X		
C401 EXCESS TRANSPORTATION INFORMAT.	C	X		
8457 Excess transportation reason, coded	M an..3	X		
8459 Excess transportation responsibility, coded	M an..3	X		

1 Pre-carriage: specification of segment TDT is obligatory.

2 Main carriage: specification of segment TDT is required. It is used to give information about the destination in the accompanying LOC segment.

3 More specific alternative to code 20: 21 relates to first carrier (and is then mandatory), 22 to second carrier, and so on

4 On-carriage: specification of segment TDT is optional. It is used to give information about the destination in the accompanying LOC segment.

5 Pre-carriage: Reference to the conveyance number of truck/van and carrier name are required for secured transport. Main carriage: carrier code and flight number shall be stated.

6 Pre-carriage: Reference to the conveyance number of truck/van and carrier name are required for secured transport.

7130	Customer authorisation number	C an..17	X		
C222	TRANSPORT IDENTIFICATION	C	X		
8213	Id of means of transport identification	C an..9	X		
1131	Code list qualifier	C an..3	X		
3055	Code list responsible agency, coded	C an..3	X		
8212	Id of the means of transport	C an..17	X		
8453	Nationality of means of transport, coded	C an..3	X		

**Example:** TDT+10+Bil 7+3+++::Åkes Åkeri'

Level 0/1 UNH BGM DTM...CNT TOD<sup>2</sup> RFF<sup>3</sup> CPI<sup>6</sup> TCC<sup>7</sup> **TDI**<sup>8</sup> NAD<sup>10</sup> GID<sup>16</sup> EQD<sup>34</sup> UNT

Level 1 Cont. of segment group 8 TDI M/99

TDI

**LEVEL 2 LOC PLACE/LOCATION IDENTIFICATION C/99****LOC***Function: A segment to indicate a location such as place of departure, destination, etc. related to this leg of transport.*

Segment structure and code values	EDIFACT	ET	Note	Swedish translation/comments
3227 PLACE/LOCATION QUALIFIER	M an..3		1	Typ av plats, kval
8 Place of destination				Bestämelseort/-plats
13 Place of transhipment				Omlastningsort
83 Place of delivery (by on carriage)				Slutlig leverans
C517 LOCATION IDENTIFICATION	C	<b>R</b>		
3225 Place/location identification	C an..25			Plats/ort, kod
1131 Code list qualifier	C an..3			
145 Airport/city				Flygplatser
3055 Code list responsible agency, coded	C an..3			
3 IATA				
3224 Place/location, Free form	C an..17	<b>X</b>		
C519 RELATED LOCATION ONE IDENTIFICAT.	C	<b>X</b>		
3223 Related place/location one identification	C an..25	<b>X</b>		
1131 Code list qualifier	C an..3	X		
3055 Code list responsible agency, coded	C an..3	X		
3222 Related place/location one, Free form	C an..70			
C553 RELATED LOCATION TWO IDENTIFICAT.	C	X		
3233 Related place/location two identification	C an..25	X		
1131 Code list qualifier	C an..3	X		
3055 Code list responsible agency, coded	C an..3	X		
3232 Related place/location two	C an..70	X		
5479 RELATION, CODED	C an..3	<b>X</b>		

**Example: LOC+8+ARN:145:3'****Place of destination is Arlanda**

1 Locations are given for main carriage and, as applicable, for on-carriage.

Level 0/1 UNH BGM DTM...CNT TOD<sup>2</sup> RFF<sup>3</sup> CPI<sup>6</sup> TCC<sup>7</sup> TDT<sup>8</sup> NAD<sup>10</sup> GID<sup>16</sup> EQD<sup>34</sup> UNT

**Level 1 Start of segment group 10 NAD M/99** **NAD**

*Function:* A group of segments to identify a party, related references, locations contacts, required documents, and charges to be paid by the party.

**LEVEL 1 NAD NAME AND ADDRESS M/1** **NAD**

*Function:* To specify the name/address and their related function, either by C082 only and/or unstructured by C058 or structured by C080 through 3207.

Segment structure and code values	EDIFACT	ET	Note	Swedish translation/comments
3035 PARTY QUALIFIER	M an..3		1	Part, kval
CN Consignee				Godsmottagare
CZ Consignor				Godsavsändare
FW Freight forwarder				Speditör
<b>TT Transfer to</b>				<b>Part till vilken godset överlåtes</b>
C082 PARTY IDENTIFICATION DETAILS	C			
3039 Party id identification	M an..17		2	Parts identifikation
1131 Code list qualifier	C an..3			Bör ej användas
3055 Code list responsible agency, coded	C an..3			
<b>3 IATA</b>				<b>Här gäller kod enligt IATA+CASS</b>
C058 NAME AND ADDRESS	C	<b>X</b>		
3124 Name and address line	M an..35	<b>X</b>		
3124 Name and address line	C an..35	<b>X</b>		
3124 Name and address line	C an..35	<b>X</b>		
3124 Name and address line	C an..35	<b>X</b>		
3124 Name and address line	C an..35	<b>X</b>		
C080 PARTY NAME	C			
3036 Party name	M an..35			Parts namn
3036 Party name	C an..35			
3036 Party name	C an..35			
3036 Party name	C an..35			
3036 Party name	C an..35			
3045 Party name format, coded	C an..3	X		
C059 STREET	C			
3042 Street and number/P.O. Box	M an..35			Gata och nummer/postbox
3042 Street and number/P.O. Box	C an..35			
3042 Street and number/P.O. Box	C an..35			
3164 CITY NAME	C an..35			Ortsnamn
3229 COUNTRY SUB-ENTITY IDENTIFICATION	C an..9			Område inom land, kod
3251 POSTCODE IDENTIFICATION	C an..9		3	Postnummer

1 All three parties are to be stated.

2 Freight forwarder (FW): identification by code is required.

3 The Swedish postcode is exchanged in unedited form, i.e. without any separating space between the third and fourth digits.

3207 COUNTRY, CODED

C an..3

Landskod

**Example: NAD+CZ+++HK IMPORT+Postbox 134:Møllersgade 17+ Padborg++6330+DK'**

Level 0/1 UNH BGM DTM...CNT TOD<sup>2</sup> RFF<sup>3</sup> CPI<sup>6</sup> TCC<sup>7</sup> TDT<sup>8</sup> NAD<sup>10</sup> GID<sup>16</sup> EQD<sup>34</sup> UNT

**Level 1** Cont. of segment group 10 NAD M/99

**Level 2** Start of segment group 11 CTA C/9 (NAD) CTA

*Function:* A group of segments to identify a contact and its communications related to the party.

**LEVEL 2 CTA CONTACT INFORMATION M/1 CTA**

*Function:* A segment to identify a person or department within a party.

Segment structure and code values	EDIFACT	ET	Note	1	2	3	4	Swedish translation/comments
3139 CONTACT FUNCTION, CODED IC Information contact	C an..3			C	C*	C*	C	
C056 DEPARTMENT OR EMPLOYEE DETAILS	C			R	R*	R*	R	
3413 Department or employee identification	C an..17			C			C	Avdelning/anställd, kod
3412 Department or employee, Free form	C an..35			C	R*	R*	C	Avdelning/anställd, klartext

**Example:** CTA+IC+::Jesper Hansen' **Contact person of organisation shown in preceding NAD segment.**

Level 0/1 UNH BGM DTM...CNT TOD<sup>2</sup> RFF<sup>3</sup> CPI<sup>6</sup> TCC<sup>7</sup> TDT<sup>8</sup> NAD<sup>10</sup> GID<sup>16</sup> EQD<sup>34</sup> UNT

**Level 1** Cont. of segment group 10 NAD M/99

**Level 2** Cont. of segment group 11 CTA C/9 (NAD) CTA

**LEVEL 3 COM COMMUNICATION CONTACT C/9 COM**

*Function:* To identify a communication number of a department or a person to whom communication should be directed.

Segment structure and code values	EDIFACT	ET	Note	1	2	3	4	Swedish translation/comments
C076 COMMUNICATION CONTACT	M			R	R*	R*	R	
3148 Communication number	M an..25			R	R*	R*	R	Kommunikationsnummer
3155 Communication channel qualifier	M an..3	1		R	R*	R*	R	Kommunikationssätt, kod
EM Electronic mail				C	C*	C*	C	Elektronisk post
FX Telefax				C	C*	C*	C	Telefax
TE Telephone				C	C*	C*	C	Telefon
TL Telex						C*	C	Telex

**Example:** COM+081234567:TE'

**Example:** COM+4681234567:TE'

1 Domestic telephone number is written as area code (or equivalent) followed immediately by the subscriber number, without any editing characters.  
International telephone number is written with a heading plus sign, immediately followed by country code, area code (or equivalent) with leading zero (or equivalent) excluded, followed by subscriber number.

Level 0/1 UNH BGM DTM...CNT TOD<sup>2</sup> RFF<sup>3</sup> CPI<sup>6</sup> TCC<sup>7</sup> TDT<sup>8</sup> NAD<sup>10</sup> **GID**<sup>16</sup> EQD<sup>34</sup> UNT

**Level 1 Start of segment group 16 GID C/999** **GID**

*Function:* A group of segments to describe the goods items for which transport is undertaken.

**LEVEL 1 GID GOODS ITEM DETAILS M/1** **GID**

*Function:* A segment to identify a goods item for which transport is undertaken. A goods item can be identified by up to three levels of packaging.

Segment structure and code values	EDIFACT	ET	Note	Swedish translation/comments
1496 GOODS ITEM NUMBER	C n..5	<b>R</b>	1	Godspost löpnummer
C213 NUMBER AND TYPE OF PACKAGES	C		2	
7224 Number of packages	M n..8			Kolliantal
7065 Type of packages identification	C an..7			Kollislag, kod
Use UN/ECE Recommendation no. 21.				
1131 Code list qualifier	C an..3	X		
3055 Code list responsible agency, coded	C an..3	X		
7064 Type of packages	C an..35			Kollislag, klartext
C213 NUMBER AND TYPE OF PACKAGES	C	<b>X</b>		
7224 Number of packages	M n..8	<b>X</b>		
7065 Type of packages identification	C an..7	<b>X</b>		
1131 Code list qualifier	C an..3	X		
3055 Code list responsible agency, coded	C an..3	X		
7064 Type of packages	C an..35	<b>X</b>		
C213 NUMBER AND TYPE OF PACKAGES	C	<b>X</b>		
7224 Number of packages	M n..8	<b>X</b>		
7065 Type of packages identification	C an..7	<b>X</b>		
1131 Code list qualifier	C an..3	X		
3055 Code list responsible agency, coded	C an..3	X		
7064 Type of packages	C an..35	<b>X</b>		

**Example: GID+1'**

1 At least one occurrence of segment GID is required in this subset.

2 Total number of packages in the consignment should be stated in segment CNT. Package details in segment GID are to be used only for the specification of individual goods items.

Level 0/1 UNH BGM DTM...CNT TOD<sup>2</sup> RFF<sup>3</sup> CPI<sup>6</sup> TCC<sup>7</sup> TDT<sup>8</sup> NAD<sup>10</sup> **GID**<sup>16</sup> EQD<sup>34</sup> UNT

**Level 1 Cont. of segment group 16 GID C/999** **GID**

**LEVEL 2 FTX FREE TEXT C/9** **FTX**

*Function:* A segment to specify processable supplementary information relating to the goods item.

Segment structure and code values	EDIFACT	ET	Note	Swedish translation/comments
4451 TEXT SUBJECT QUALIFIER AAA Doods description <b>TDT Transport details remarks</b>	M an..3			Textämnen, kval Varubenämning <b>1 Tilläggsinformation om transporten</b>
4453 TEXT FUNCTION, CODED	C an..3	X		
C107 TEXT REFERENCE	C	✘		
4441 Free text, coded	M an..3	✘	2	Typ av gods vid 4451=TDT
1131 Code list qualifier	C an..3	X		
3055 Code list responsible agency, coded <b>3 IATA</b> 87 Assigned by carrier	C an..3	✘		<b>Enligt IATAs kodlista</b> Transportörens kodlista
C108 TEXT LITERAL	C			
4440 Free text	M an..70			
4440 Free text	C an..70			
4440 Free text	C an..70			
4440 Free text	C an..70			
4440 Free text	C an..70			
3453 LANGUAGE, CODED	C an..3			

**Example: FTX+TDT+VRM:::3'**

1 Used to state the nature of goods, when goods items are specified individually.

2 IATA's code list for Special handling codes is published as a separate document under 'Bibliotek/Kodlistor' on the Edifact Transport's web site.

Level 0/1 UNH BGM DTM...CNT TOD<sup>2</sup> RFF<sup>3</sup> CPI<sup>6</sup> TCC<sup>7</sup> TDT<sup>8</sup> NAD<sup>10</sup> GID<sup>16</sup> EQD<sup>34</sup> UNT**Level 1** Cont. of segment group 16 GID C/999**Level 2** Start of segment group 19 MEA C/99

(GID) MEA

*Function:* A group of segments to specify measurements applicable to a goods item.**LEVEL 2 MEA MEASUREMENTS M/1****MEA***Function:* A segment to specify measurements, other than dimensions, applicable to a goods item.

Segment structure and code values	EDIFACT	ET	Note	Swedish translation/comments
6311 MEASUREMENT APPLICATION QUALIF. WT Weights VOL Volume	M an..3		1	Mängdapplikation, kval Vikt Volym
C502 MEASUREMENT DETAILS	C			
6313 Measurement dimension, coded G Gross weight	C an..3			Bruttovikt
6321 Measurement significance, coded	C an..3	X		
6155 Measurement attribute, coded	C an..3	X		
C174 VALUE/RANGE	C	R		
6411 Measure unit qualifier KGM Kilogram CMQ Cubic centimetre MTQ Cubic metre	M an..3			
6314 Measurement value	C n..18	R		Mängd, värde
6162 Range minimum	C n..18	X		
6152 Range maximum	C n..18	X		
7383 SURFACE/LAYER INDICATOR, CODED	C an..3	X		

**Example: MEA+WT+G+KGM:5768'****Gross weight of goods item is 5768 kg**

1 The MEA segment (group 19) is used for measurements on goods item level, e.g. for handling codes BIG or HEA. For totals referring to the whole consignment, see segment CNT.

Level 0/1 UNH BGM DTM...CNT TOD<sup>2</sup> RFF<sup>3</sup> CPI<sup>6</sup> TCC<sup>7</sup> TDT<sup>8</sup> NAD<sup>10</sup> GID<sup>16</sup> EQD<sup>34</sup> UNT

**Level 1** Cont. of segment group 16 GID C/999

**Level 2** Start of segment group 20 DIM C/99 (GID) DIM

*Function:* A group of segments to specify dimensions applicable to a goods item.

**LEVEL 2 DIM DIMENSIONS M/1** **DIM**

*Function:* A segment to specify dimensions applicable to a goods item.

Segment structure and code values	EDIFACT	ET	Note	Swedish translation/comments
6145 DIMENSION QUALIFIER	M an..3			Dimensionstyp, kval
<b>2 Package dimensions</b>				<b>Gods/kollis mått</b>
9 Off-standard dimension general			1	Avvikelser från standard
C211 DIMENSIONS	M			
6411 Measure unit qualifier	M an..3			
CNT Centimetre				
MTR Metre				
6168 Length dimension	C n..15			Längddimension
6140 Width dimension	C n..15			Breddimension
6008 Height dimension	C n..15			Höjddimension

**Example: DIM+9+MTR:3:0,5:1'** **Goods item has dimensions 3 x 0,5 x 1 metre**

1 Dimension of packages in segment DIM: This information is commonly used for transport by air, for other modes of transport they are used only for the reporting exceptional package dimensions. In this subset DIM is used either for the whole consignment (only one GID group is used) or as appropriate for package dimensions specific to each goods item, e.g. for handling code BIG.

Level 0/1 UNH BGM DTM...CNT TOD<sup>2</sup> RFF<sup>3</sup> CPI<sup>6</sup> TCC<sup>7</sup> TDT<sup>8</sup> NAD<sup>10</sup> GID<sup>16</sup> EQD<sup>34</sup> UNT

**Level 1** Cont. of segment group 16 GID C/999

**Level 2** Start of segment group 22 PCI C/9 (GID) PCI

*Function:* A group of segments to specify marks and numbers of a goods item.

<b>LEVEL 2 PCI</b>	<b>PACKAGE IDENTIFICATION M/1</b>	<b>PCI</b>
--------------------	-----------------------------------	------------

*Function:* A segment to specify marks and numbers of a goods item.

Segment structure and code values	EDIFACT	ET	Note	Swedish translation/comments
4233 MARKING INSTRUCTIONS, CODED	C an..3	✘	1	Märkningsinstruktion, kod
<b>18 Carrier's instructions</b>				<b>Kolliidentitet, STE</b>
<b>20 Industry instructions</b>				<b>Kolliidentitet, branschstandard</b>
<b>24 Shipper assigned</b>				<b>Kolliidentitet, avsändarspecifik</b>
<b>28 Mark free text</b>				<b>Fri text</b>
C210 MARKS & LABELS	C	R		
7102 Shipping marks	M an..35			Kollimärke, i form enligt 4233
7102 Shipping marks	C an..35			
7102 Shipping marks	C an..35			
7102 Shipping marks	C an..35			
7102 Shipping marks	C an..35			
7102 Shipping marks	C an..35			
7102 Shipping marks	C an..35			
7102 Shipping marks	C an..35			
7102 Shipping marks	C an..35			
7102 Shipping marks	C an..35			
7102 Shipping marks	C an..35			
8275 CONTAINER/PACKAGE STATUS, CODED	C an..3	X		

<b>Example: PCI+18+373999991234567890'</b>	<b>Package identification according to STE is 373999991234567890</b>
--	--

1 At least one occurrence of segment PCI is required in this message subset. Goods may be marked in two ways, either as free text (shipping marks) or by means of a unique package number that can be bar coded. When the interchange agreement is established it should be determined which method is to be used.

Level 0/1 UNH BGM DTM...CNT TOD<sup>2</sup> RFF<sup>3</sup> CPI<sup>6</sup> TCC<sup>7</sup> TDT<sup>8</sup> NAD<sup>10</sup> GID<sup>16</sup> EQD<sup>34</sup> UNT

**Level 1 Segment group 16 GID C/999**

**Level 2 Start of segment group 28 TCC C/99**

**(GID) TCC**

*Function:* A group of segments to specify charge associated with the goods item.

**LEVEL 2 TCC TRANSPORT CHARGE/RATE CALCULATIONS M/1**

**TCC**

*Function:* A segment to specify charge associated with the goods item.

Segment structure and code values	EDIFACT	ET	Note	Swe. translation and comments
<b>C200 CHARGE</b>	C	X		
8023 Freight and charges identification	C an..17	X		
1131 Code list qualifier	C an..3	X		
3055 Code list responsible agency, coded	C an..3	X		
8022 Freight and charges	C an..26	X		
4237 Prepaid/collect indicator, coded	C an..3	X		
<b>C203 RATE/TARIFF CLASS</b>	C			
5243 Rate/tariff class identification	M an..9			Rat/tariffklass (IATAs kodlista)
1131 Code list qualifier	C an..3	X		
3055 Code list responsible agency, coded	C an..3	X		
5242 Rate/tariff class	C an..35	X		
5275 Supplementary rate/tariff basis identification	C an..6			ULD ratklass (IATA tariffkod)
1131 Code list qualifier	C an..3	X		
3055 Code list responsible agency, coded	C an..3	X		
5275 Supplementary rate/tariff basis identification	C an..6			IATA servicekoder eller ULD fraktkostnadskoder (IATA kod)
1131 Code list qualifier	C an..3	X		
3055 Code list responsible agency, coded	C an..3	X		
<b>C528 COMMODITY/RATE DETAIL</b>	C			
7357 Commodity/rate identification	C an..18			Varunummer (IATAs tariffkod)
1131 Code list qualifier	C an..3	X		
3055 Code list responsible agency, coded	C an..3	X		
<b>C554 RATE/TARIFF CLASS DETAIL</b>	C	X		
5243 Rate/tariff class identification	M an..9	X		
1131 Code list qualifier	C an..3	X		
3055 Code list responsible agency, coded	C an..3	X		

**Example: TCC++U'**

**IATA unit load device charge**

Level 0/1 UNH BGM DTM...CNT TOD<sup>2</sup> RFF<sup>3</sup> CPI<sup>6</sup> TCC<sup>7</sup> TDT<sup>8</sup> NAD<sup>10</sup> GID<sup>16</sup> EQD<sup>34</sup> UNT

Level 1 Segment group 16 GID C/999

Level 2 Cont. of segment group 28 TCC C/99 (GID) TCC

**LEVEL 3 PRI PRICE DETAILS C/1 PRI**

*Function:* To specify price information.

*Enh. descr:* A segment to specify price details such as price (e.g. 100 dollar) and unit price basis (e.g. per 1000 kilogram).

Segment structure and code values	EDIFACT	ET	Note	Swe. translation and comments
<b>C509 PRICE INFORMATION</b>	<b>C</b>	<b>R</b>	<b>1</b>	<b>Prisinformation</b>
5125 Price qualifier	M an..3			Prisfunktion, kval
CAL Calculation price				Beloppsberäkning
5118 Price	C n..15	R		Pris
5375 Price type, coded	C an..3	X		
5387 Price type qualifier	C an..3	X		
5284 Unit price basis	C n..9	X		
6411 Measure unit qualifier	C an..3	X		
<b>5213 SUB-LINE PRICE CHANGE, CODED</b>	<b>C an..3</b>	<b>X</b>		

<b>Example: PRI+CAL:1,50'</b>	<b>Calculation price is 1.50 (in the currency of the air waybill)</b>
-------------------------------	---

1 Message subset UNH/0057='SE0028': Compared to the Nordic Implementation Guide for IFTM Messages segment PRI has been opened for use.

Level 0/1 UNH BGM DTM...CNT TOD<sup>2</sup> RFF<sup>3</sup> CPI<sup>6</sup> TCC<sup>7</sup> TDT<sup>8</sup> NAD<sup>10</sup> GID<sup>16</sup> EQD<sup>34</sup> UNT

**Level 1 Segment group 16 GID C/999**

**Level 2 Cont. of segment group 28 TCC C/99**

**(GID) TCC**

**LEVEL 3 MOA MONETARY AMOUNT C/9**

**MOA**

*Function: A segment to specify a monetary amount, such as unit price.*

Segment structure and code values	EDIFACT	ET	Note	Swe. translation and comments
C516 MONETARY AMOUNT	M			
5025 Monetary amount type qualifier	M an..3			
66 Goods item total				Godspostbelopp
5004 Monetary amount	C n..18	R		
6345 Currency, coded	C an..3			
6343 Currency qualifier	C an..3	X		
4405 Status, coded	C an..3	X		

**Example: MOA+66:3472.50'**

**Goods item total is 3472.50 (in the currency of the air waybill)**

Level 0/1 UNH BGM DTM...CNT TOD<sup>2</sup> RFF<sup>3</sup> CPI<sup>6</sup> TCC<sup>7</sup> TDT<sup>8</sup> NAD<sup>10</sup> GID<sup>16</sup> EQD<sup>34</sup> UNT

**Level 1 Segment group 16 GID C/999**

**Level 2 Cont. of segment group 28 TCC C/99**

**(GID) TCC**

**LEVEL 3 QTY QUANTITY C/9 QTY**

*Function: A segment to indicate a quantity, for example ordered quantity.*

Segment structure and code values	EDIFACT	ET	Note	Swe. translation and comments
C186 QUANTITY DETAILS	M			
6063 Quantity qualifier	M an..3			
100 Chargeable weight				Fraktgrundande vikt
101 Chargeable gross weight				Fraktgrundande bruttovikt
6060 Quantity	M n..15			
6411 Measure unit qualifier	C an..3			
KGM Kilogram				

<b>Example: QTY+100:24:KGM'</b>	<b>Chargeable weight is 24 kilogram</b>
---------------------------------	---

Level 0/1 UNH BGM DTM...CNT TOD<sup>2</sup> RFF<sup>3</sup> CPI<sup>6</sup> TCC<sup>7</sup> TDT<sup>8</sup> NAD<sup>10</sup> GID<sup>16</sup> EQD<sup>34</sup> **UNT**

**LEVEL 0 UNT MESSAGE TRAILER M/1 UNT**

*Function:* To end and check the completeness of a message.

Segment structure and code values	EDIFACT	ET	Note	Swedish translation/comments
0074 NUMBER OF SEGMENTS IN A MESSAGE	M n..6			
0062 MESSAGE REFERENCE NUMBER	M an..14			

**Example:** UNT+134+MSGID002'

## 4.4 MESSAGE EXAMPLE

Information type	Data value
Document type	Final shipping notification
Document date	1998-02-23
Issued at	Landvetter
Freight forwarder's reference	FORW123
Air waybill number	117-11208223'
Freight forwarder code	80470114384
Freight forwarders department	WSEJAER
Consignor	ERICSSON MICROWAVE SYSTEMS AB, FLOJELBERGSGATAN, SE-431 84 MOLNDAL
Consignee	ERICSSON TRANSMISSIONI SPA,ATT: ARMANDO CIARLETTA, STRADA STATALE 17 KM 96.600, I-670 39 SULMONA L'AQUILA
Currency	Swedish krona
Secured pre-carried transport	No
Declared value for carriage	NVD
Declared value for Customs	NVD
Amount of insurance	- - -
Weight valuation charges	Prepaid
Other charges	Prepaid
Total prepaid weight charges	255.00
Total prepaid other charges	334.00'
Total prepaid amount	589
Number of packages	1
Gross weight	6 kilogram
Handling information	Goods marked: Address, 80822 Docs att: Invoice
Scheduled departure	1998-02-23 6.00 a.m.
Flight number	SK5301
Destination	Copenhagen
Final destination	Rome
Rate line	1
Number of packages	1
Cargo description	MINILINK EQUIPMENT
Volume	0.03 cubic metre
Chargeable gross weight	6.00
Freight charge rate	250.00 minimum charge - minimum weight
Cargo item total	250.00
Rate line	2
Cargo description	1 AT 50X28X23 CM'
Freight charge rate	14.00 per kilogram small package
Cargo item total	84.00
Chargeable gross weight	6 kilogram

```

UNH+GOT8005435+IFTMIN:S:93AB:UN:SE0028'
BGM+630+FORW123+9'
DTM+137:19980223:102'
DTM+189:199802230600:203'
TSR++Z06'
CUX+4:SEK'
MOA+114:589'
MOA+95'
MOA+96'
MOA+94'
FTX+HAN+++GOODS MARKED?: ADDRESS, 80822:DOCS ATT?: INVOICE'
CNT+11:1'

```

```
CNT+7:6:KGM'  
LOC+44+GOT'  
RFF+FF:FORW123'  
RFF+AWB:117-11208223'  
CPI+16++P'  
CPI+12++P'  
TCC+:::P'  
MOA+153:334'  
MOA+100:255'  
TDT+20+SK5301+4++SK'  
LOC+8+CPH::3'  
LOC+83+ROM::3'  
NAD+CZ+++ERICSSON MICROWAVE SYSTEMS  
AB+FLOJELBERGSGATAN+MOLNDAL++43184+SE'  
NAD+CN+++ERICSSON TRANSMISSIONI SPA+ATT?: ARMANDO CIARLETTA:STRADA  
STATALE 17 KM 96.600+SULMONA L?'AQUILA++I-670 39+IT'  
NAD+FW+80470114384::3'  
CTA+IC+:WSEJAER'  
GID+1+1:PK'  
FTX+AAA+++MINILINK EQUIPMENT'  
MEA+AAE+AAW+MTQ:0.03'  
MEA+AAE+G+KGM:6'  
TCC+:::P+B'  
PRI+CAL:250'  
MOA+66:250'  
QTY+101:6:KGM'  
GID+2'  
FTX+AAA+++1 AT 50X28X23 CM'  
TCC+:::P+K'  
PRI+CAL:14'  
MOA+66:84'  
QTY+100:6:KGM'  
UNT+42+GOT8005435'  
...
```

Excerpt from Edifact-file containing a booking with data according to the above example. The file is exchanged as a character string. It is presented here first, for readability reasons, as one segment per line, and then in an "interchange format" as an unedited string of characters.

```
...UNH+GOT8005435+IFTMIN:S:93AB:UN:SE0028'BGM+740+FORW123+9'D  
TM+137:19980223:102'DTM+189:199802230600:203'CUX+4:SEK'MOA+114:5  
89'MOA+95'MOA+96'MOA+94'FTX+HAN+++GOODS MARKED?: ADDRESS, 80822:  
DOCS ATT?: INVOICE'CNT+11:1'CNT+7:6:KGM'LOC+44+GOT'RFF+FF:FORW12  
3'RFF+AWB:117-11208223'CPI+16++P'CPI+12++P'TCC+:::P'MOA+153:334  
'MOA+100:255'TDT+20+SK5301+4++SK'LOC+8+CPH::3'LOC+83+ROM::3'NAD+  
CZ+++ERICSSON MICROWAVE SYSTEMS AB+FLOJELBERGSGATAN+MOLNDAL++431  
84+SE'NAD+CN+++ERICSSON TRANSMISSIONI SPA+ATT?: ARMANDO CIARLETT  
A:STRADA STATALE 17 KM 96.600+SULMONA L?'AQUILA++I-670 39+IT'NAD  
+FW+80470114384::3'CTA+IC+:WSEJAER'GID+1+1:PK'FTX+AAA+++MINILINK  
EQUIPMENT'MEA+AAE+AAW+MTQ:0.03'MEA+AAE+G+KGM:6'TCC+:::P+B'PRI+  
CAL:250'MOA+66:250'QTY+101:6:KGM'GID+2'FTX+AAA+++1 AT 50X28X23 C  
M'TCC+:::P+K'PRI+CAL:14'MOA+66:84'QTY+100:6:KGM'UNT+42+GOT80054  
35'...
```